



966L

Wheel Loader

Technical Specifications

Not all attachments available in all regions. Consult your Cat® dealer for specific configurations available in your region.

Table of Contents

Specifications	2	Sound	3
Engine	2	Service Refill Capacities	3
Buckets	2	Dimensions	4
Weight	2	Dimension Changes – Tires	5
Operating Specifications	2	Bucket Fill Factors and Selection Guide	6
Transmission	2	Operating Specifications – Buckets	7
Brakes	3	Construction Forks	10
Hydraulic System	3	Standard and Optional Equipment	12
Axles	3		
Cab	3		
966L Industrial & Waste Configuration	15	Service Refill Capacities	17
Key Features and Benefits	15	Dimensions	18
Engine	16	Tire Options for Scrap and Waste	19
Transmission	16	Operating Specifications – Waste Buckets	20
Brakes	17	Scrap Bucket Chart	21
Hydraulic System	17	Standard and Optional Equipment	22
Axles	17	Machine Guarding and Features	25
Cab	17		
Sound	17		
966L Forestry Configuration	27	Sound	29
Key Features and Benefits	27	Service Refill Capacities	29
Engine	28	Dimension Changes – Tires	30
Transmission	28	Log Forks	31
Brakes	29	Woodchip Buckets	35
Hydraulic System	29	Standard and Optional Equipment	36
Axles	29	Recommended Equipment and Work Tools	39
Cab	29		

966L Wheel Loader Specifications

Engine

Engine Model	Cat C9.3	
Maximum Power @ 1,700 rpm		
ISO 14396	227 kW	309 hp (metric)
Maximum Net Power @ 1,700 rpm		
ISO 9249	207 kW	281 hp (metric)
Peak Torque (1,200 rpm)		
ISO 14396	1581 N·m	
Maximum Net Torque (1,000 rpm)		
ISO 9249	1507 N·m	
Bore	115 mm	
Stroke	149 mm	
Displacement	9.3 L	

- Cat engine with ACERT™ Technology – based on local requirements, meets China Nonroad Stage III emission standards (equivalent to U.S. EPA Tier 3 and EU Stage IIIA).
- The power ratings apply at the stated speed when tested under the reference conditions for the specified standards.
- The net power advertised is the power available at the flywheel when the engine is equipped with fan, alternator, air cleaner and aftertreatment.

Buckets

Bucket Capacities	3.20-7.40 m ³
-------------------	--------------------------

Weight

Operating Weight	23 220 kg
------------------	-----------

- Weight based on a machine configuration with Michelin 26.5R25 XHA2 L3 radial tires, full fluids, operator, standard counterweight, cold start, roading fenders, Product Link™, open/open axles (front/rear), power train guard, secondary steering, sound suppression and a 4.2 m³ general purpose bucket with BOCE.

Operating Specifications

Static Tipping Load – Full 37° Turn

With Tire Deflection	14 668 kg
No Tire Deflection	15 822 kg

Breakout Force	173 kN
----------------	--------

- For a machine configuration as defined under “Weight.”
- Full compliance to ISO 14397-1:2007 Sections 1 thru 6, which requires 2% verification between calculations and testing.
- Compliance to ISO 14397-1:2007 Sections 1 thru 5.

Transmission

Forward 1	6.5 km/h	4.0 mph
Forward 2	13.0 km/h	8.1 mph
Forward 3	23.5 km/h	14.6 mph
Forward 4	39.5 km/h	24.5 mph
Reverse 1	7.1 km/h	4.4 mph
Reverse 2	14.4 km/h	8.9 mph
Reverse 3	25.9 km/h	16.1 mph
Reverse 4	39.5 km/h	24.5 mph

- Maximum travel speed in standard vehicle with empty bucket and standard L3 tires with 826 mm (32.5 in) roll radius.

966L Wheel Loader Specifications

Brakes

Brakes	Brakes meet ISO 3450:2011 standards
--------	-------------------------------------

Hydraulic System

Implement Pump Type	Variable Displacement Piston	
Implement System		
Maximum Pump Output (2,200 rpm)	360 L/min	95 gal/min
Maximum Operating Pressure	31 000 kPa	4,496 psi
Optional 3 rd /4 th Function Maximum Flow	240 L/min	63 gal/min
Optional 3 rd /4 th Function Maximum Pressure	21 780 kPa	3,159 psi
Hydraulic Cycle Time with Rated Payload		
Raise from Carry Position	6.1 Sec.	
Dump, at Maximum Raise	1.4 Sec.	
Lower, Empty, Float Down	2.6 Sec.	
Total	10.1 Sec.	

Axles

Front	Fixed	
Rear	Oscillating ±13 degrees	
Maximum Single-Wheel Rise and Fall	502 mm	19.5 in

Cab

ROPS/FOPS	ROPS/FOPS meet ISO 3471:2008 and ISO 3449:2005 Level II standards
-----------	---

Sound

The sound values indicated below are for specific operating conditions only. Machine and operator sound levels will vary at different engine and/or cooling fan speeds. Hearing protection may be needed when the machine is operated with a cabin that is not properly maintained, or when the doors and/or windows are open for extended periods or in a noisy environment.

With Cooling Fan Speed at Maximum Value:

Operator Sound Pressure Level (ISO 6396:2008)	72 dB(A)
Exterior Sound Power Level (ISO 6395:2008)	109 dB(A)
Exterior Sound Pressure Level (SAE J88:2013)	76 dB(A)*

With Cooling Fan Speed at 70 % of Maximum Value**:

Operator Sound Pressure Level (ISO 6396:2008)	69 dB(A)
Exterior Sound Power Level (ISO 6395:2008)	108 L _{WA} ***

*Distance of 15 m, moving forward in second gear ratio.

**For machines in countries that adopt the "EU Directives."

***European Union Directives "2000/14/EC" as amended by "2005/88/EC."

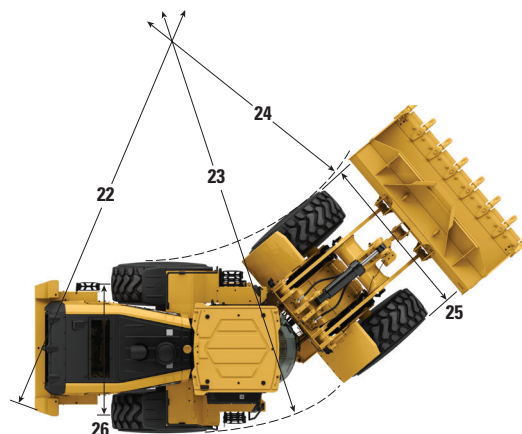
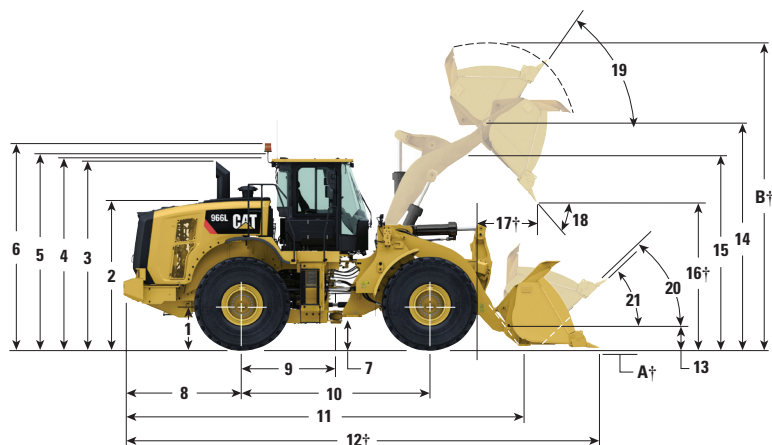
Service Refill Capacities

Fuel Tank	302.0 L	79.8 gal
Cooling System	71.6 L	18.9 gal
Crankcase	24.5 L	6.5 gal
Transmission	58.5 L	15.5 gal
Differentials and Final Drives – Front	57.0 L	15.1 gal
Differentials and Final Drives – Rear	57.0 L	15.1 gal
Hydraulic Tank	125 L	33.0 gal

966L Wheel Loader Specifications

Dimensions

All dimensions are approximate.



	Standard Lift	High Lift
1 Height to Axle Centerline	799 mm	799 mm
2 Height to Top of Hood	2818 mm	2818 mm
3 Height to Top of Exhaust Pipe	3522 mm	3522 mm
4 Height to Top of ROPS	3587 mm	3587 mm
5 Height to Top of Product Link Antenna	3636 mm	3636 mm
6 Height to Top of Warning Beacon	3859 mm	3859 mm
7 Ground Clearance	434 mm	434 mm
8 Center Line of Rear Axle to Edge of Counterweight	2251 mm	2500 mm
9 Center Line of Rear Axle to Hitch	1775 mm	1775 mm
10 Wheelbase	3550 mm	3550 mm
11 Overall Length (without bucket)	7362 mm	8111 mm
12 Shipping Length (with bucket level on ground)*†	8750 mm	9570 mm
13 Hinge Pin Height at Carry Height	630 mm	778 mm
14 Hinge Pin Height at Maximum Lift	4235 mm	4793 mm
15 Lift Arm Clearance at Maximum Lift	3643 mm	4140 mm
16 Dump Clearance at Maximum Lift and 45° Discharge*†	2991 mm	3549 mm
17 Reach at Maximum Lift and 45° Discharge*†	1353 mm	1328 mm
18 Dump Angle at Maximum Lift and Dump (on stops)*	49 degrees	48 degrees
19 Rack Back at Maximum Lift*	62 degrees	71 degrees
20 Rack Back at Carry Height*	50 degrees	49 degrees
21 Rack Back at Ground*	42 degrees	39 degrees
22 Turning Radius to Counterweight	6804 mm	6804 mm
23 Turning Radius to Outside of Tires	6761 mm	6761 mm
24 Turning Radius to Inside of Tires	3853 mm	3853 mm
25 Width Over Tires – Maximum (unloaded)	2991 mm	2991 mm
Width Over Tires – Maximum (loaded)	3009 mm	3009 mm
26 Tread Width	2230 mm	2230 mm

*With 4.2 m³ general purpose pin on bucket with BOCE (see Operating Specifications for other buckets).

†Dimensions are listed in Operating Specifications charts.

All height and tire related dimensions are with Michelin 26.5R25 XHA2 L3 tires (see Tire Option Chart for other tires.) "Width Over Tires" dimensions are over the bulge and include growth.

966L Wheel Loader Specifications

Dimension Changes – Tires

Tire Brand	Michelin	Michelin	Michelin	Bridgestone	Bridgestone	Bridgestone	Triangle
Tire Size	25.5R25	26.5R25	26.5R25	26.5R25	26.5R25	775/65R25	26.5R25
Tread Type	L-4	L-5	L-5	L-3	L-5	L-3	L-3
Tread Pattern	XLDD1	XLDD2	XMINED2	VJT	VSDL	VTS	TB516
Width over Tires – Maximum (empty)*	2987 mm	2986 mm	2970 mm	2982 mm	2874 mm	3080 mm	2971 mm
Width over Tires – Maximum (loaded)*	3019 mm	3011 mm	2994 mm	3016 mm	2900 mm	3101 mm	2999 mm
Change in Vertical Dimensions (average of front and rear)	44 mm	39 mm	53 mm	15 mm	50 mm	17 mm	24 mm
Change in Horizontal Reach	-36 mm	-34 mm	-32 mm	-3 mm	-29 mm	-5 mm	-9 mm
Change in Clearance Circle (radius) to Outside of Tires	5 mm	1 mm	-7 mm	3 mm	-54 mm	46 mm	-5 mm
Change in Clearance Circle (radius) to Inside of Tires	-5 mm	-1 mm	7 mm	-3 mm	54 mm	-46 mm	5 mm
Change in Operating Weight (without Bballast)	420 kg	716 kg	1068 kg	164 kg	1136 kg	856 kg	100 kg
Change in Static Tipping Load – Straight	303 kg	517 kg	771 kg	118 kg	821 kg	618 kg	72 kg
Change in Static Tipping Load – Articulated	271 kg	461 kg	688 kg	106 kg	732 kg	551 kg	64 kg

*Width over bulge and includes tire growth.

966L Wheel Loader Specifications

Operating Specifications – Buckets

Linkage		Standard Linkage						
Bucket Type		General Purpose – Pin On						High Lift Linkage Change**
Edge Type		Bolt-On Cutting Edges	Teeth and Segments	Bolt-On Cutting Edges	Teeth and Segments	Bolt-On Cutting Edges	Teeth and Segments	
Capacity – Rated	m ³	3.8	3.8	4.0	4.0	4.2	4.2	
Capacity – Rated at 110% Fill Factor	m ³	4.2	4.2	4.4	4.4	4.6	4.6	
Width	mm	3220	3271	3220	3271	3220	3271	
16† Dump Clearance at Maximum Lift and 45° Discharge	mm	3067	2915	3058	2905	2991	2837	558
17† Reach at Maximum Lift and 45° Discharge	mm	1292	1432	1299	1438	1353	1490	-24
Reach at Level Lift Arm and Bucket Level	mm	2704	2908	2715	2920	2803	3008	404
A† Digging Depth	mm	124	124	124	124	124	124	-25
12† Overall Length	mm	8651	8876	8663	8888	8750	8975	821
B† Overall Height with Bucket at Maximum Lift	mm	5788	5788	5902	5902	5902	5902	559
Loader Clearance Circle Radius with Bucket at Carry Position	mm	7487	7571	7490	7574	7511	7597	469
Static Tipping Load, Straight (With Tire Deflection)*	kg	16 917	16 734	16 900	16 716	16 699	16 514	59
Static Tipping Load, Straight (No Tire Deflection)*	kg	18 045	17 860	18 037	17 851	17 828	17 641	-25
Static Tipping Load, Articulated (With Tire Deflection)*	kg	14 894	14 711	14 873	14 689	14 686	14 501	-112
Static Tipping Load, Articulated (No Tire Deflection)*	kg	16 029	15 844	16 017	15 831	15 822	15 636	-180
Breakout Force	kN	187	185	185	183	173	171	-14
Operating Weight*	kg	23 112	23 250	23 164	23 302	23 220	23 358	1612

*Static tipping loads and operating weights shown are based on a machine configuration with Michelin 26.5R25 XHA2 L3 radial tires, full fluids, operator, standard counterweight, cold start, roading fenders, Product Link, open/open axles (front/rear), power train guard, secondary steering and sound suppression.

(With Tire Deflection) Full compliance to ISO 14397-1:2007 Sections 1 thru 6, which requires 2% verification between calculations and testing.

(No Tire Deflection) Compliance to ISO 14397-1:2007 Sections 1 thru 5.

**Maximum values.

†Illustration shown with Dimension charts.

966L Wheel Loader Specifications

Operating Specifications – Buckets

Linkage		Standard Linkage				High Lift Linkage Change**
Bucket Type		Rock – Pin On		Flat Floor – Pin On		
Edge Type		Bolt-On Cutting Edges	Teeth and Segments	Bolt-On Cutting Edges	Teeth and Segments	
Capacity – Rated	m ³	3.4	3.4	4.2	4.2	
Capacity – Rated at 110% Fill Factor	m ³	3.7	3.7	4.6	4.6	
Width	mm	3252	3252	3220	3271	
16 † Dump Clearance at Maximum Lift and 45° Discharge	mm	3093	2995	2949	2787	558
17 † Reach at Maximum Lift and 45° Discharge	mm	1419	1541	1245	1372	-24
Reach at Level Lift Arm and Bucket Level	mm	2783	2939	2774	2978	404
A † Digging Depth	mm	99	99	124	124	-25
12 † Overall Length	mm	8740	8901	8721	8946	821
B † Overall Height with Bucket at Maximum Lift	mm	5815	5815	5901	5901	559
Loader Clearance Circle Radius with Bucket at Carry Position	mm	7530	7573	7504	7589	469
Static Tipping Load, Straight (With Tire Deflection)*	kg	17 120	17 050	16 622	16 439	59
Static Tipping Load, Straight (No Tire Deflection)*	kg	18 262	18 191	17 731	17 546	-25
Static Tipping Load, Articulated (With Tire Deflection)*	kg	15 053	14 983	14 623	14 439	-112
Static Tipping Load, Articulated (No Tire Deflection)*	kg	16 204	16 133	15 740	15 555	-180
Breakout Force	kN	186	185	177	175	-14
Operating Weight*	kg	24 007	24 059	23 217	23 355	1612

*Static tipping loads and operating weights shown are based on a machine configuration with Michelin 26.5R25 XHA2 L3 radial tires, full fluids, operator, standard counterweight, cold start, roading fenders, Product Link, open/open axles (front/rear), power train guard, secondary steering and sound suppression. If a rock bucket is added, those values are with Michelin 26.5R25 XLDD2 L5 tires.

(With Tire Deflection) Full compliance to ISO 14397-1:2007 Sections 1 thru 6, which requires 2% verification between calculations and testing.

(No Tire Deflection) Compliance to ISO 14397-1:2007 Sections 1 thru 5.

**Maximum values.

†Illustration shown with Dimension charts.

966L Wheel Loader Specifications

Operating Specifications – Buckets – Aggregate Handler

Package		Aggregate Handler		
Bucket Type		General Purpose – Pin On		
Edge Type		Bolt-On Cutting Edges	Bolt-On Cutting Edges	Bolt-On Cutting Edges
Capacity – Rated	m ³	4.2	4.4	4.6
Capacity – Rated at 110% Fill Factor	m ³	4.6	4.8	5.1
Width	mm	3220	3220	3220
16 † Dump Clearance at Maximum Lift and 45° Discharge	mm	2991	2979	2977
17 † Reach at Maximum Lift and 45° Discharge	mm	1353	1366	1365
Reach at Level Lift Arm and Bucket Level	mm	2803	2821	2822
A † Digging Depth	mm	124	124	124
12 † Shipping Length (with Bucket)	mm	8798	8816	8817
B † Overall Height with Bucket at Maximum Lift	mm	5902	5912	5874
Loader Clearance Circle with Bucket at Carry Position	mm	7511	7516	7516
Static Tipping Load, Straight (With Tire Deflection)*	kg	18 303	18 236	18 307
Static Tipping Load, Straight (No Tire Deflection)*	kg	19 570	19 497	19 601
Static Tipping Load, Articulated (With Tire Deflection)*	kg	16 044	15 986	16 036
Static Tipping Load, Articulated (No Tire Deflection)*	kg	17 325	17 261	17 343
Breakout Force	kN	173	171	170
Operating Weight*	kg	23 915	23 904	23 955

*Static tipping loads and operating weights shown are based on a machine configuration with Michelin 26.5R25 XHA2 L3 radial tires, full fluids, operator, aggregate counterweight, cold start, roading fenders, Product Link, open/open axles (front/rear), power train guard, secondary steering and sound suppression.

(With Tire Deflection) Full compliance to ISO 14397-1:2007 Sections 1 thru 6, which requires 2% verification between calculations and testing.

(No Tire Deflection) Compliance to ISO 14397-1:2007 Sections 1 thru 5.

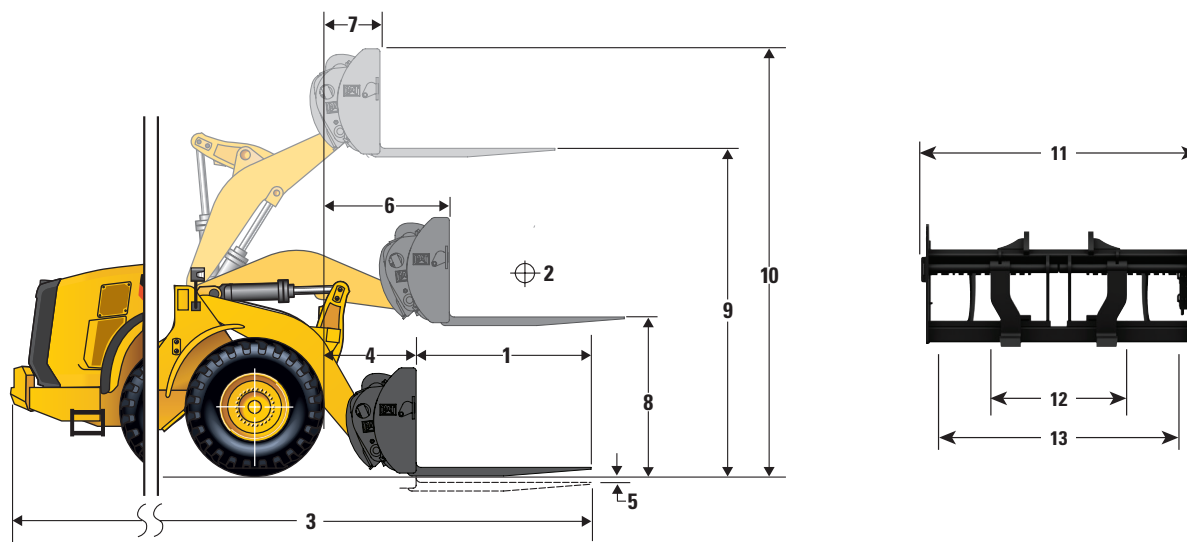
†Illustration shown with Dimension charts.

Aggregate Handler configuration is not compatible with teeth and segments, tips, rock buckets, high lift, and L5 tires.

Other buckets are available and offerings vary by region. Consult your local Cat dealer for further details.

966L Wheel Loader Specifications

Operating Specifications – 2.5 Carriage Construction Fork



Construction Fork - Fusion™

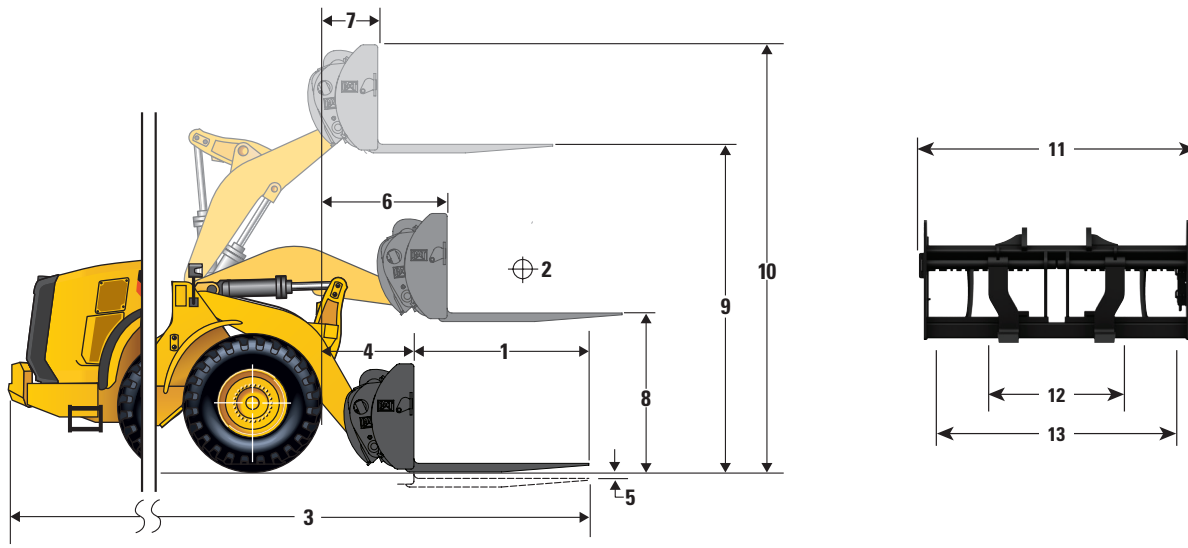
	mm	mm	mm	mm	mm
1 Fork Tine Length	1220	1524	1830	2134	2438
2 Load Center	610	762	915	1067	1220
3 Overall Length	8903	9226	9531	9836	10 140
4 Reach at Ground	1087	1106	1106	1106	1106
5 Dig Depth	-7	-7	-7	-7	-7
6 Reach with Level Arm	1688	1688	1688	1688	1688
7 Reach at Full Lift	821	821	821	821	821
8 Clearance with Level Arm	1960	1960	1960	1960	1960
9 Clearance at Full Lift	4043	4043	4043	4043	4043
10 Overall Height	5083	5083	5083	5083	5083
11 Carriage Width	2528	2528	2528	2528	2528
12 Minimum Fork Spacing	576	576	576	576	576
13 Maximum Fork Spacing	2178	2178	2178	2178	2178
Tine Width	180	180	180	180	180
Tine Thickness	90	90	90	90	90
	kg	kg	kg	kg	kg
Load Capacity (per pair)	22 200	17 800	14 800	12 700	11 300
Tipping Load – Straight*	12 620	11 924	11 345	10 807	10 310
Tipping Load – Full Turn*	11 168	10 532	10 013	9531	9085
Operating Weight	22 557	22 621	22 683	22 746	22 808
Rated Load % of Full Turn Tip:					
50% of Tip**	5584	5266	5007	4766	4542
60% of Tip (rough terrain)	6701	6319	6008	5719	5451
80% of Tip (firm and level)	8934	8426	7807	6937	6222

*ISO 14397-1:2007

**SAE J1197 – 50% of full turn static tipping load or hydraulic limit

966L Wheel Loader Specifications

Operating Specifications – 2.8 Carriage Construction Fork



Construction Fork - Fusion

	mm	mm	mm	mm	mm
1 Fork Tine Length	1220	1524	1830	2134	2438
2 Load Center	610	762	915	1067	1220
3 Overall Length	8903	9226	9531	9836	10 140
4 Reach at Ground	1087	1087	1087	1087	1087
5 Dig Depth	-7	-7	-7	-7	-7
6 Reach with Level Arm	1688	1688	1688	1688	1688
7 Reach at Full Lift	821	821	821	821	821
8 Clearance with Level Arm	1960	1960	1960	1960	1960
9 Clearance at Full Lift	4043	4043	4043	4043	4043
10 Overall Height	5083	5083	5083	5083	5083
11 Carriage Width	2833	2833	2833	2833	2833
12 Minimum Fork Spacing	590	590	590	590	590
13 Maximum Fork Spacing	2493	2493	2493	2493	2493
Tine Width	180	180	180	180	180
Tine Thickness	90	90	90	90	90
	kg	kg	kg	kg	kg
Load Capacity (per pair)	22 200	17 800	14 800	12 700	11 300
Tipping Load – Straight*	12 579	11 888	11 310	10 775	10 278
Tipping Load – Full Turn*	11 128	10 497	9979	9949	9053
Operating Weight	22 610	22 671	22 733	22 795	22 858
Rated Load % of Full Turn Tip:					
50% of Tip**	5564	5248	4989	4749	4526
60% of Tip (rough terrain)	6677	6298	5987	5699	5432
80% of Tip (firm and level)	8902	8397	7799	6930	6215

*ISO 14397-1:2007

**SAE J1197 – 50% of full turn static tipping load or hydraulic limit.

966L Wheel Loader Standard and Optional Equipment

Standard and Optional Equipment

Standard and optional equipment may vary. Consult your Cat dealer for details.

	Standard	Optional		Standard	Optional
POWER TRAIN			OPERATOR ENVIRONMENT		
Axles, open differential, front and rear	✓		Air conditioner, heater, and defroster	✓	
Axles – automatic front/rear differential locks, axle oil cooler, ecology drains, extreme temperature seals, seal guards		✓	Beverage holders (2) with storage compartment for cell phone/MP3 player	✓	
Brake wear indicators	✓		Bucket/work tool function lockout	✓	
Brakes, full hydraulic enclosed wet-disc with Integrated Braking System (IBS)	✓		Cab air filter	✓	
Economy mode (productive)	✓		Cab, pressurized and sound suppressed (ROPS/FOPS)	✓	
Engine, Cat C9.3 – meets China Nonroad Stage III emission standards (equivalent to U.S. EPA Tier 3/EU Stage IIIA)	✓		Coat hook	✓	
Fan, radiator, electronically controlled, hydraulically driven, temperature sensing, on demand	✓		Cover, HVAC metallic		✓
Fan, VPF (variable pitch fan), automatic and manual control		✓	EH controls, SAL (single axis lever) lift and tilt function	✓	
Fuel priming pump (electric)	✓		EH controls, joystick lift and tilt – additional integrated roller switches for 3 rd function		✓
Fuel/water separator	✓		EH controls, SAL 3 rd function		✓
Parking brake, disc and caliper	✓		EH parking brake	✓	
Precleaner, engine air intake	✓		Ergonomic cab access ladders and handrails	✓	
Radiator, high debris with wider fin spacing		✓	Horn, electric	✓	
Switch, transmission neutralizer lockout	✓		Light, two dome (cab)	✓	
Torque converter, locking clutch with free wheel stator	✓		Mirrors, heated rearview external with integrated spot mirrors		✓
Transmission, automatic planetary power shift (4F/4R)	✓		Mirrors, rearview external with integrated spot mirrors	✓	
CAT TECHNOLOGY			Post mounted membrane 16 switch keypad	✓	
Detect technologies:			Precleaner, HVAC		✓
Rear vision camera	✓		Radio, AM/FM/USB/MP3 Bluetooth		✓
Cat rear object detection		✓	Radio, AM/FM/CD/USB/MP3 Bluetooth		✓
Link technologies:			Two-way CB radio ready		✓
Product Link	✓		Radio ready (entertainment) includes antenna, speakers and converter (12V, 10-amp)	✓	
VIMS™		✓	Rear vision camera within multi-function 18 cm color LCD touchscreen display (capability for displaying machine status setting and health parameters)	✓	
Payload technologies: Cat Production Measurement 2.0, Printer, Aggregate Autodig		✓	Receptacles (2), 12V	✓	
Machine security system		✓			

(continued on next page)

966L Wheel Loader Standard and Optional Equipment

Standard and Optional Equipment *(continued)*

Standard and optional equipment may vary. Consult your Cat dealer for details.

	Standard	Optional
OPERATOR ENVIRONMENT <i>(continued)</i>		
Roof, metallic		✓
Seat, Cat Comfort (cloth) air suspension	✓	
Seat, air suspension, heated		✓
Seat belt, 51 mm (2 in) retractable	✓	
Seat belt, 76 mm (3 in) retractable, with indicator		✓
Steering, secondary, electric		✓
Steering, steering wheel	✓	
Sun visor, front	✓	
Sun visor, rear		✓
Viscous mounts	✓	
Wet-arm wipers/washers front and rear, intermittent front wiper	✓	
Windows, rubber mounted		✓
Window, sliding (left and right sides)	✓	
Windows, with front guard		✓
Windows, with full guards front, rear and sides		✓
Work Area Vision System (WAVS), full time rear vision display		✓
ELECTRICAL AND LIGHTING		
Alarm, back-up	✓	
Alternator, 145-amp brushed	✓	
Auxiliary halogen cab-mounted work lights (four additional) or		✓
Auxiliary front HI LED (two additional) and two additional auxiliary rear LED cab mounted work lights with two LED work lights in the radiator grill and LED front turn signals. Also includes replacement of the standard four halogen cab-mounted work lights with four LED work lights (the standard offering and only roading light available is the halogen roading light)		✓
Batteries (2), maintenance free 1,400 CCA	✓	
Ignition key; start/stop switch	✓	
LED stop, turn, tail lights (2)		✓
Lighting system: four halogen work lights (cab mounted), two halogen rear vision lights (hood mounted)	✓	

	Standard	Optional
ELECTRICAL AND LIGHTING <i>(continued)</i>		
Main disconnect switch	✓	
Receptacle start (cables not included)	✓	
Starter, electric, heavy duty	✓	
Starting and charging system (24V)	✓	
Warning amber strobe beacon		✓
FLUIDS		
Premixed extended life coolant with freeze protection to -34°C (-29°F)	✓	
Premixed extended life coolant with freeze protection to -50°C (-58°F)		✓
HYDRAULICS		
Couplings, Cat O-ring face seal	✓	
Hoses, Cat XT™	✓	
Hydraulic oil cooler (swing out)	✓	
Hydraulic system, load sensing	✓	
Oil sampling valves	✓	
3 rd function with Ride Control – standard linkage, high lift linkage, forestry linkage		✓
Remote diagnostic pressure taps	✓	
Ride control, 2V		✓
Steering, load sensing	✓	
LINKAGE		
Autolube		✓
Forestry		✓
High lift		✓
Kickout, lift and tilt, automatic (adjustable in cab)	✓	
Quick coupler ready		✓
Z-bar, cast crosstube/tilt lever	✓	
STARTERS, BATTERIES, AND ALTERNATORS		
Cold start – 240V		✓
WORK TOOLS		
Forks, logging		✓
Forks, pallet		✓
Fusion quick coupler		✓
Performance Series buckets		✓

(continued on next page)

966L Wheel Loader Standard and Optional Equipment

Standard and Optional Equipment *(continued)*

Standard and optional equipment may vary. Consult your Cat dealer for details.

	Standard	Optional		Standard	Optional
COMPUTERIZED MONITORING SYSTEM			OTHER STANDARD AND OPTIONAL EQUIPMENT <i>(continued)</i>		
With following gauges:	✓		Fenders, front	✓	
Speedometer/tachometer			Fenders, roading		✓
Digital gear range indicator			Filters: fuel, engine air, engine oil, hydraulic oil, transmission	✓	
Temperature: engine coolant, hydraulic oil, transmission oil			Grease zerks	✓	
Fuel level			Grill, airborne debris	✓	
With following warning indicators:	✓		Guard, power train		✓
Temperature: axle oil, engine intake manifold			Hitch, drawbar with pin	✓	
Pressure: engine oil, fuel pressure hi/low, primary steering oil, service brake oil			Hood, non-metallic power tilting	✓	
Battery voltage hi/low			Platform, window washing		✓
Engine air filter restriction			Precleaner, turbine		✓
Hydraulic oil filter restriction			Precleaner, trash		✓
Hydraulic oil low			Precleaner rain cap	✓	
Parking brake			Service centers (electrical and hydraulic)	✓	
Transmission filter bypass			Sight gauges: engine coolant, hydraulic oil, and transmission oil level	✓	
OTHER STANDARD AND OPTIONAL EQUIPMENT			Toolbox	✓	
Auto idle shutdown	✓		Vandalism protection caplocks	✓	
Cat Autolube System		✓	OTHER CONFIGURATIONS		
Cold weather package: transmission filter bypass, fan pump bypass, jacket water or engine block heater, ether aid ready		✓	Block handler		✓
Ecology drains for engine, transmission, and hydraulics	✓		Industrial and waste handler		✓
			Forestry		✓
			Port and harbor		✓



966L

Industrial & Waste

In the harsh scrap, waste, and recycling environment, your operation requires a wheel loader to process material as efficiently and safely as possible with minimal downtime.

Durability

- Robotically welded frame design provides rigid structures that absorb torsional loads.
- L Series articulating hitch design provides increased bearing force capacity.
- Heavy-duty transmissions and axles are designed to handle extreme conditions inherent with scrap handling applications.

Achieve Greater Productivity

- Lock-up clutch transmission matches the engine power to increase fuel efficiency while delivering optimal performance.
- Easy-to-load Performance Series buckets improve material retention and reduce dig times, significantly improving productivity and fuel efficiency.
- Optional Cat Fusion quick coupler and 3rd valve hydraulic functions allow for greater work tool and jobsite versatility.
- Automatic idle engine shutdown system significantly reduces idle time, overall operating hours, and fuel consumption.
- Standard and optional traction aids increase traction, diminish tire wear, and further reduce operating costs.
- Optional high lift linkage offers increased hinge pin height for improved stacking capability as well as easier load out of high side trucks and containers.
- Cat payload technologies provide accurate weighing* of the materials you are loading and hauling. Payload data is displayed in real-time to improve productivity and reduce overloading.

Safety Features

- Cab access with wide door and stair-like steps adds solid stability.
- Floor-to-ceiling windshield, large mirrors with integrated spot mirrors, and rear vision camera provide industry-leading all-around visibility.
- Rear vision camera enhances visibility behind the machine, helping you work safely and confidently.

Easy, Comfortable Operator Environment

- Sound-suppression, seals, and viscous cab mounts decrease noise and vibration for a quieter work environment.
- Ergonomic controls are easy to use, intuitive, and user-friendly.
- Touchscreen multi-function color display keeps operators focused.
- Inclined steps and convenient grab handles ease accessibility to the operating space.

Reduced Maintenance Time and Costs

- One-piece tilting hood makes engine access fast and easy.
- Electrical service centers enhance convenience and accessibility.
- Easy access to fuel fill and daily maintenance points means less servicing time is required.
- Remote flash support.
- Longer tire life with optional on-the-go traction aids.
- Optional integrated Cat autolube system provides full lube system monitoring and diagnostic test visibility.
- Optional integrated window cleaning platform with tie-off point allows easy and safe access to the front of the machine.

*Optional configurations and equipment may vary from region to region and requires conformance to Caterpillar payload policy. Consult your dealer or Caterpillar representative for details. Not legal for trade.

966L Industrial & Waste Specifications

Engine		
Engine Model	Cat C9.3	
Maximum Power @ 1,700 rpm		
ISO 14396	227 kW	309 hp
Maximum Net Power @ 1,700 rpm		
ISO 9249	207 kW	281 hp
Peak Torque (1,200 rpm)		
ISO 14396	1581 N·m	
Maximum Net Torque (1,000 rpm)		
ISO 9249	1507 N·m	
Bore	115 mm	
Stroke	149 mm	
Displacement	9.3 L	

- Cat engine with ACERT Technology – based on local requirements, meets China Nonroad Stage III emission standards (equivalent to U.S. EPA Tier 3 and EU Stage IIIA).
- The power ratings apply at the stated speed when tested under the reference conditions for the specified standards.
- The net power advertised is the power available at the flywheel when the engine is equipped with fan, alternator, air cleaner and aftertreatment.

Transmission		
Forward 1	6.5 km/h	4.0 mph
Forward 2	13.0 km/h	8.1 mph
Forward 3	23.5 km/h	14.6 mph
Forward 4	39.5 km/h	24.5 mph
Reverse 1	7.1 km/h	4.4 mph
Reverse 2	14.4 km/h	8.9 mph
Reverse 3	25.9 km/h	16.1 mph
Reverse 4	39.5 km/h	24.5 mph

- Maximum travel speed in standard vehicle with empty bucket and standard L3 tires with 826 mm (32.5 in) roll radius.

Brakes

Brakes	Brakes meet ISO 3450:2011 standards
--------	-------------------------------------

Hydraulic System

Implement Pump Type	Variable Displacement Piston
---------------------	------------------------------

Implement System

Maximum Pump Output (2,200 rpm)	360 L/min	95 gal/min
Maximum Operating Pressure	31 000 kPa	4,496 psi
Optional 3 rd /4 th Function Maximum Flow	240 L/min	63 gal/min
Optional 3 rd /4 th Function Maximum Pressure	21 780 kPa	3,159 psi

Hydraulic Cycle Time with Rated Payload

Raise from Carry Position	6.1 Sec.
Dump, at Maximum Raise	1.4 Sec.
Lower, Empty, Float Down	2.6 Sec.
Total	10.1 Sec.

Axles

Front	Fixed
Rear	Oscillating ±13 degrees
Maximum Single-Wheel Rise and Fall	502 mm 19.5 in

Cab

ROPS/FOPS	ROPS/FOPS meet ISO 3471:2008 and ISO 3449:2005 Level II standards
-----------	---

Sound

The sound values indicated below are for specific operating conditions only. Machine and operator sound levels will vary at different engine and/or cooling fan speeds. Hearing protection may be needed when the machine is operated with a cabin that is not properly maintained, or when the doors and/or windows are open for extended periods or in a noisy environment.

With Cooling Fan Speed at Maximum Value:

Operator Sound Pressure Level (ISO 6396:2008)	72 dB(A)
Exterior Sound Power Level (ISO 6395:2008)	109 dB(A)
Exterior Sound Pressure Level (SAE J88:2013)	76 dB(A)*

With Cooling Fan Speed at 70 % of Maximum Value**:

Operator Sound Pressure Level (ISO 6396:2008)	69 dB(A)
Exterior Sound Power Level (ISO 6395:2008)	108 L _{WA} ***

*Distance of 15 m, moving forward in second gear ratio.

**For machines in countries that adopt the "EU Directives."

***European Union Directives "2000/14/EC" as amended by "2005/88/EC."

- Compliance to ISO 14397-1:2007 Sections 1 thru 5.

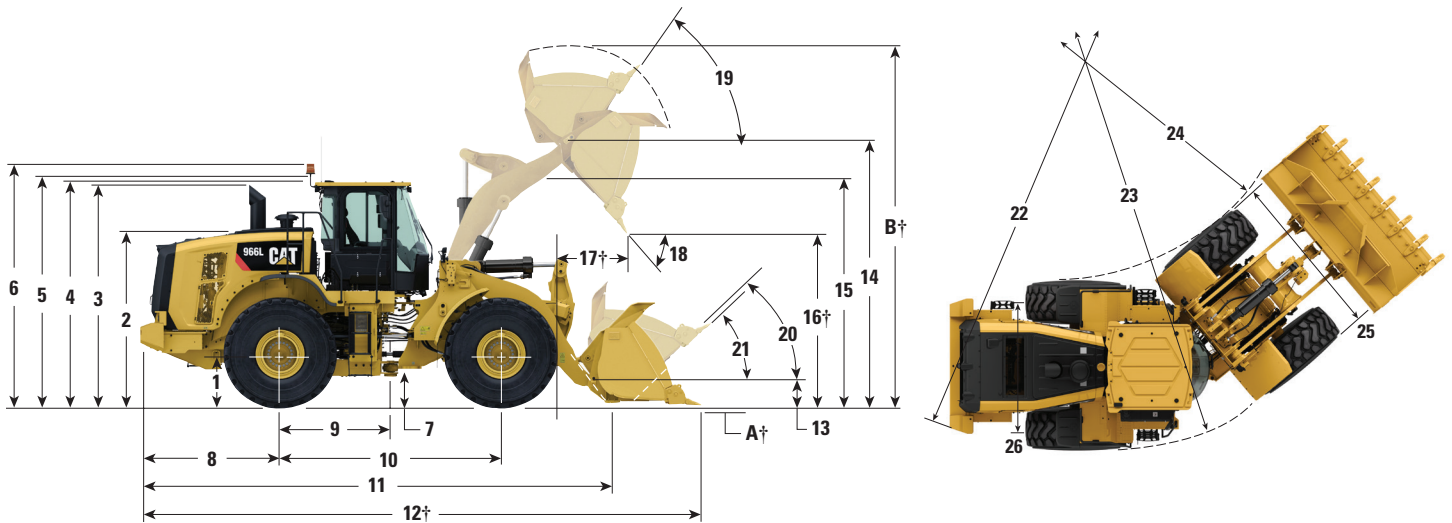
Service Refill Capacities

Fuel Tank	302.0 L	79.8 gal
Cooling System	71.6 L	18.9 gal
Crankcase	24.5 L	6.5 gal
Transmission	58.5 L	15.5 gal
Differentials and Final Drives – Front	57.0 L	15.1 gal
Differentials and Final Drives – Rear	57.0 L	15.1 gal
Hydraulic Tank	125 L	33.0 gal

966L Industrial & Waste Specifications

Dimensions

All dimensions are approximate.



	Standard Lift		High Lift	
1 Height to Axle Centerline	799 mm	2'7"	799 mm	2'7"
2 Height to Top of Hood	2818 mm	9'3"	2818 mm	9'3"
3 Height to Top of Exhaust Pipe	3522 mm	11'7"	3522 mm	11'7"
4 Height to Top of ROPS	3587 mm	11'9"	3587 mm	11'9"
5 Height to Top of Product Link Antenna	3636 mm	11'11"	3636 mm	11'11"
6 Height to Top of Warning Beacon	3859 mm	12'8"	3859 mm	12'8"
7 Ground Clearance	434 mm	1'5"	434 mm	1'5"
8 Center Line of Rear Axle to Edge of Counterweight	2180 mm	7'2"	2500 mm	8'2"
9 Center Line of Rear Axle to Hitch	1775 mm	5'10"	1775 mm	5'10"
10 Wheelbase	3550 mm	11'8"	3550 mm	11'8"
11 Overall Length (without bucket)	7289 mm	23'11"	8109 mm	26'8"
12 Shipping Length (with bucket level on ground)*†	8750 mm	28'9"	9570 mm	31'5"
13 Hinge Pin Height at Carry Height	630 mm	2'1"	778 mm	2'7"
14 Hinge Pin Height at Maximum Lift	4235 mm	13'11"	4793 mm	15'9"
15 Lift Arm Clearance at Maximum Lift	3643 mm	11'11"	4140 mm	13'6"
16 Dump Clearance at Maximum Lift and 45° Discharge*†	2991 mm	9'9"	3549 mm	11'7"
17 Reach at Maximum Lift and 45° Discharge*†	1353 mm	4'5"	1328 mm	4'4"
18 Dump Angle at Maximum Lift and Dump (on stops)*	49 degrees		48 degrees	
19 Rack Back at Maximum Lift*	62 degrees		71 degrees	
20 Rack Back at Carry Height*	50 degrees		49 degrees	
21 Rack Back at Ground*	42 degrees		39 degrees	
22 Clearance Circle (radius) to Counterweight	6804 mm	22'3"	6804 mm	22'3"
23 Clearance Circle (radius) to Outside of Tires	6761 mm	22'2"	6761 mm	22'2"
24 Clearance Circle (radius) to Inside of Tires	3770 mm	12'4"	3770 mm	12'4"
25 Width over Tires (unloaded)	2991 mm	9'10"	2991 mm	9'10"
26 Tread Width	2230 mm	7'4"	2230 mm	7'4"

*With 4.2 m³ (5.5 yd³) general purpose pin on bucket with BOCE (see Operating Specifications for other buckets).

†Dimensions are listed in Operating Specification charts.

All height and tire related dimensions are with Michelin 26.5R25 XHA2 L3 tires (see Tire Option Chart for other tires).

966L Industrial & Waste Specifications

Tire Options for Scrap and Waste

Tire Brand	Brawler HPS	Brawler HPS	Michelin	Bridgestone
Tire Size	25.5R25	26.5R25	26.5R25	26.5R25
Tread Type	-	-	L-3	L-3
Tread Pattern	Solidflex Smooth	Solidflex Traction	XHA2	VJT
Width over Tires – Maximum (empty)*	2959 mm	2959 mm	2991 mm	2982 mm
Width over Tires – Maximum (loaded)*	2968 mm	2968 mm	3009 mm	3016 mm
Change in Vertical Dimensions (Average of front and rear)	0 mm	0 mm	-37 mm	-22 mm
Change in Horizontal Reach	0 mm	0 mm	-9 mm	-11 mm
Change in Clearance Circle (radius) to Outside of Tires	0 mm	0 mm	41 mm	48 mm
Change in Clearance Circle (radius) to Inside of Tires	0 mm	0 mm	-41 mm	-48 mm
Change in Operating Weight (without Ballast)	0 kg	-222 kg	-4464 kg	-4300 kg
Change in Static Tipping Load – Straight	0 kg	-160 kg	-3225 kg	-3105 kg
Change in Static Tipping Load – Articulated	0 kg	-143 kg	-2876 kg	-2773 kg

*Width over bulge and includes tire growth.

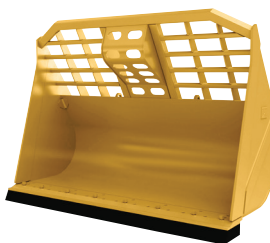
966L Industrial & Waste Specifications

Operating Specifications – Waste Buckets

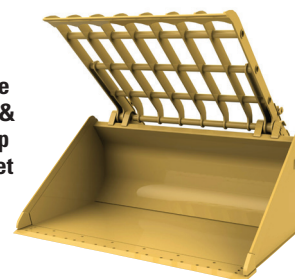
Waste Load & Carry Bucket



Waste Dozing Bucket



Waste Tamp & Clamp Bucket



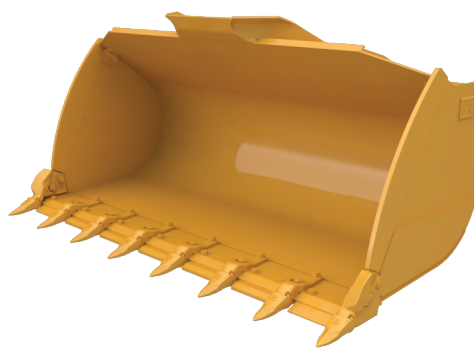
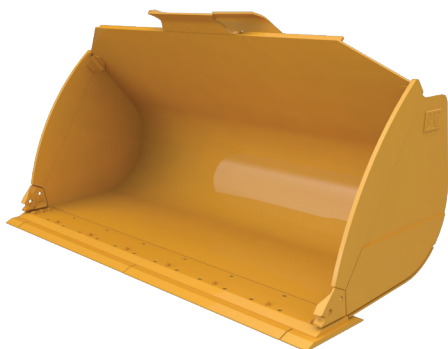
Bucket Type		Pin-On Load & Carry	Pin-On Dozing	Pin-On Tamp & Clamp	
Edge Type		Steel Bolt-On Cutting Edges	Steel Bolt-On Cutting Edges	Steel Bolt-On Cutting Edges	High Lift Delta*
Capacity – Rated	m ³	7.40	6.50	5.00	—
Capacity – Rated at 110% Fill Factor	m ³	8.10	7.20	5.50	—
Width	mm	3357	3357	3357	—
16† Dump Clearance at Maximum Lift and 45° Discharge	mm	2669	2950	2456	558
17† Reach at Maximum Lift and 45° Discharge	mm	1526	1245	1740	24
Reach at Level Lift Arm and Bucket Level	mm	3199	2802	3501	404
12† Overall Length	mm	9133	8736	9435	587
A† Overall Height with Bucket at Maximum Lift	mm	6376	6735	5515	558
Loader Clearance Circle Radius with Bucket at Carry Position	mm	7686	7584	7768	264
Static Tipping Load, Straight with Tire Squash	kg	20 063	22 057	17 440	-2931
Static Tipping Load, Articulated with Tire Squash	kg	17 764	19 581	15 318	-2676
Breakout Force	kN	1836	182	111	-10
Operating Weight	kg	28 856	28 649	29 879	234

†Illustration shown with Dimension charts.

*Maximum values.

Static tipping loads and operating weights shown are based on machine configuration with Brawler HPS Solidflex Smooth tires, full fluids, operator, standard lift linkage, standard Waste Arrangement guarding, front window guard, rear guard counterweight, light guards, auto diff lock axles (front/rear) and two valve hydraulics.

Scrap Bucket Chart



Package		966L Scrap						
Bucket Type		Pin On General Purpose				Fusion General Purpose		
Edge Type		Steel Bolt-On Cutting Edges				Steel Bolt-On Cutting Edges		
Capacity – Rated	m ³	3.8	4.0	4.2	4.6	3.8	4.2	4.6
Capacity – Rated at 110% Fill Factor	m ³	4.2	4.4	4.6	5.1	4.2	4.6	5.1
Width	mm	3220	3220	3220	3220	3220	3220	3220
16 Dump Clearance at Maximum Lift and 45° Discharge	mm	3104	3095	3028	3014	3075	2997	2984
17 Reach at Maximum Lift and 45° Discharge	mm	1300	1307	1361	1373	1335	1406	1409
Reach at Level Lift Arm and Bucket Level	mm	2712	2723	2811	2830	2756	2866	2876
Digging Depth	mm	87	87	87	87	87	79	86
12 Overall Length	mm	8712	8723	8811	8830	8756	8859	8875
A Overall Height with Bucket at Maximum Lift	mm	5825	5939	5939	5911	5840	5997	6075
Loader Clearance Circle Radius with Bucket at Carry Position	mm	7487	7490	7512	7516	7495	7519	7525
Static Tipping Load, Straight (Rigid Tire)	kg	21 798	21 796	21 560	21 602	21 146	20 839	21 058
Static Tipping Load, Articulated (Rigid Tire)	kg	19 420	19 414	19 195	19 224	18 799	18 516	18 700
Breakout Force	kN	187	185	173	170	181	166	164
Operating Weight*	kg	27 959	28 011	28 067	28 107	28 376	28 440	28 554

*Static tipping loads and operating weights shown are based on machine configuration with Brawler HPS Solidflex Smooth tires, full fluids, operator, standard lift linkage, standard Waste Arrangement guarding, front window guard, rear guard counterweight, light guards, auto diff lock axles (front/rear), and two valve hydraulics.

966L Industrial & Waste Standard & Optional Equipment

Standard and Optional Equipment

Standard and optional equipment may vary. Consult your Cat dealer for details.

	Standard	Optional		Standard	Optional
POWER TRAIN			OPERATOR ENVIRONMENT		
Axles, open differential, front and rear	✓		Air conditioner, heater, and defroster	✓	
Axles – automatic front/rear differential locks, axle oil cooler, ecology drains, extreme temperature seals, seal guards		✓	Beverage holders (2) with storage compartment for cell phone/MP3 player	✓	
Brake wear indicators	✓		Bucket/work tool function lockout	✓	
Brakes, full hydraulic enclosed wet-disc with Integrated Braking System (IBS)	✓		Cab air filter	✓	
Economy mode (productive)	✓		Cab, pressurized and sound suppressed (ROPS/FOPS)	✓	
Engine, Cat C9.3 – meets China Nonroad Stage III emission standards (equivalent to U.S. EPA Tier 3/EU Stage IIIA)	✓		Coat hook	✓	
Fan, radiator, electronically controlled, hydraulically driven, temperature sensing, on demand	✓		Cover, HVAC metallic		✓
Fan, VPF (variable pitch fan), automatic and manual control		✓	EH controls, SAL (single axis lever) lift and tilt function	✓	
Fuel priming pump (electric)	✓		EH controls, joystick lift and tilt – additional integrated roller switches for 3 rd function		✓
Fuel/water separator	✓		EH controls, SAL 3 rd function		✓
Parking brake, disc and caliper	✓		EH parking brake	✓	
Precleaner, engine air intake	✓		Ergonomic cab access ladders and handrails	✓	
Radiator, high debris with wider fin spacing		✓	Horn, electric	✓	
Switch, transmission neutralizer lockout	✓		Light, two dome (cab)	✓	
Torque converter, locking clutch with free wheel stator	✓		Mirrors, heated rearview external with integrated spot mirrors		✓
Transmission, automatic planetary power shift (4F/4R)	✓		Mirrors, rearview external with integrated spot mirrors	✓	
CAT TECHNOLOGY			Post mounted membrane 16 switch keypad	✓	
Detect technologies:			Precleaner, HVAC		✓
Rear vision camera	✓		Radio, AM/FM/USB/MP3 Bluetooth		✓
Cat rear object detection		✓	Radio, AM/FM/CD/USB/MP3 Bluetooth		✓
Link technologies:			Radio, CB ready		✓
Product Link	✓		Radio ready (entertainment) includes antenna, speakers and converter (12V, 10-amp)	✓	
VIMS		✓	Rear vision camera within multi-function 18 cm color LCD touchscreen display (capability for displaying machine status setting and health parameters)	✓	
Payload technologies: Cat Production Measurement 2.0, Printer, Aggregate Autodig		✓	Receptacles (2), 12V	✓	
Machine security system		✓			

(continued on next page)

Standard and Optional Equipment *(continued)*

Standard and optional equipment may vary. Consult your Cat dealer for details.

	Standard	Optional
OPERATOR ENVIRONMENT <i>(continued)</i>		
Roof, metallic		✓
Seat, Cat Comfort (cloth) air suspension	✓	
Seat, air suspension, heated		✓
Seat belt, 51 mm (2 in) retractable	✓	
Seat belt, 76 mm (3 in) retractable, with indicator		✓
Steering, secondary		✓
Steering, steering wheel	✓	
Sun visor, front	✓	
Sun visor, rear		✓
Viscous mounts	✓	
Wet-arm wipers/washers front and rear, intermittent front wiper	✓	
Windows, rubber mounted		✓
Window, sliding (left and right sides)	✓	
Windows, with front guard		✓
Windows, with full guards front, rear and sides		✓
Work Area Vision System (WAVS), full time rear vision display		✓
ELECTRICAL AND LIGHTING		
Alarm, back-up	✓	
Alternator, 145-amp brushed	✓	
Auxiliary halogen cab-mounted work lights (four additional) or		✓
Auxiliary front HI LED (two additional) and two additional auxiliary rear LED cab mounted work lights with two LED work lights in the radiator grill and LED front turn signals. Also includes replacement of the standard four halogen cab-mounted work lights with four LED work lights (the standard offering and only roading light available is the halogen roading light)		✓
Batteries (2), maintenance free 1,400 CCA	✓	
Ignition key; start/stop switch	✓	
LED stop, turn, tail lights (2)		✓
Lighting system: four halogen work lights (cab mounted), two halogen rear vision lights (hood mounted)	✓	

	Standard	Optional
ELECTRICAL AND LIGHTING <i>(continued)</i>		
Main disconnect switch	✓	
Receptacle start (cables not included)	✓	
Starter, electric, heavy duty	✓	
Starting and charging system (24V)	✓	
Warning amber strobe beacon		✓
FLUIDS		
Premixed extended life coolant with freeze protection to -34°C (-29°F)	✓	
Premixed extended life coolant with freeze protection to -50°C (-58°F)		✓
HYDRAULICS		
Couplings, Cat O-ring face seal	✓	
Hoses, Cat XT	✓	
Hydraulic oil cooler (swing out)	✓	
Hydraulic system, load sensing	✓	
Oil sampling valves	✓	
3 rd function with Ride Control – standard linkage, high lift linkage, forestry linkage		✓
Remote diagnostic pressure taps	✓	
Ride control, 2V		✓
Steering, load sensing	✓	
LINKAGE		
Autolube		✓
Forestry		✓
High lift		✓
Kickout, lift and tilt, automatic (adjustable in cab)	✓	
Quick coupler ready		✓
Z-bar, cast crosstube/tilt lever	✓	
STARTERS, BATTERIES, AND ALTERNATORS		
Cold start – 240V		✓
WORK TOOLS		
Forks, logging		✓
Forks, pallet		✓
Fusion quick coupler		✓
Performance Series buckets		✓

(continued on next page)

966L Industrial & Waste Standard & Optional Equipment

Standard and Optional Equipment *(continued)*

Standard and optional equipment may vary. Consult your Cat dealer for details.

	Standard	Optional		Standard	Optional
COMPUTERIZED MONITORING SYSTEM			OTHER STANDARD AND OPTIONAL EQUIPMENT <i>(continued)</i>		
With following gauges:	✓		Fenders, front	✓	
Speedometer/tachometer			Fenders, roading		✓
Digital gear range indicator			Filters: fuel, engine air, engine oil, hydraulic oil, transmission	✓	
Temperature: engine coolant, hydraulic oil, transmission oil			Grease zerks	✓	
Fuel level			Grill, airborne debris	✓	
With following warning indicators:	✓		Guard, power train		✓
Temperature: axle oil, engine intake manifold			Hitch, drawbar with pin	✓	
Pressure: engine oil, fuel pressure hi/low, primary steering oil, service brake oil			Hood, non-metallic power tilting	✓	
Battery voltage hi/low			Platform, window washing		✓
Engine air filter restriction			Precleaner, turbine		✓
Hydraulic oil filter restriction			Precleaner, trash		✓
Hydraulic oil low			Precleaner rain cap	✓	
Parking brake			Service centers (electrical and hydraulic)	✓	
Transmission filter bypass			Sight gauges: engine coolant, hydraulic oil, and transmission oil level	✓	
OTHER STANDARD AND OPTIONAL EQUIPMENT			Toolbox	✓	
Auto idle shutdown	✓		Vandalism protection caplocks	✓	
Cat Autolube System		✓	OTHER CONFIGURATIONS		
Cold weather package: transmission filter bypass, fan pump bypass, jacket water or engine block heater, ether aid ready		✓	Block handler		✓
Ecology drains for engine, transmission, and hydraulics	✓		Industrial and waste handler		✓
			Forestry		✓
			Port and harbor		✓

966L Industrial & Waste Standard & Optional Equipment

Standard and Optional Equipment (continued)

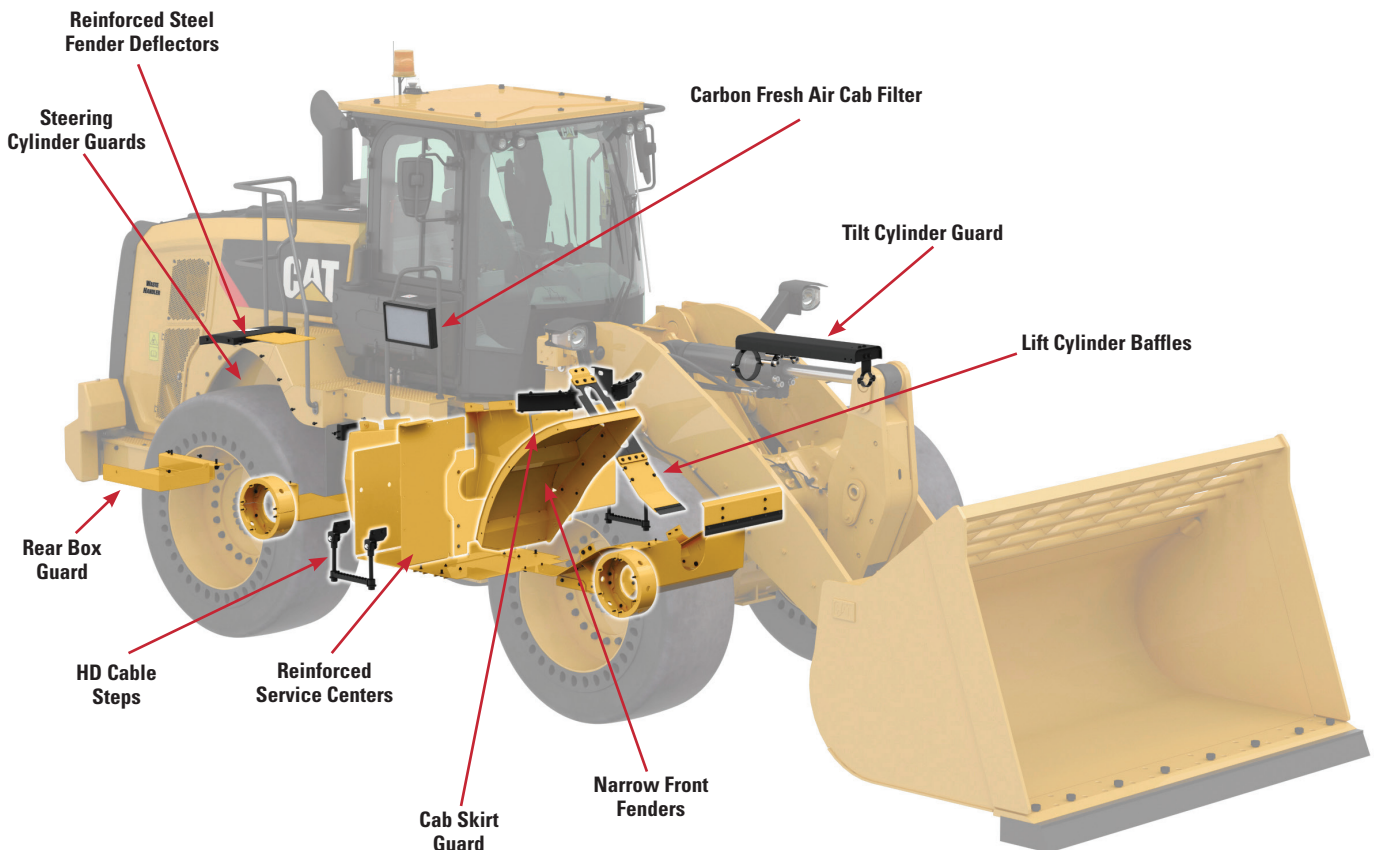
Standard

- Axle seal guards
- Steering cylinder guard
- Crankcase guard
- Power train guard
- Tilt cylinder guard
- Lower cab skirt
- Rear box reinforcement
- Reinforced service centers
- Heavy duty cable steps
- Lift cylinder baffles
- Narrow front fenders
- Steel reinforced rear fender deflectors
- Carbon fresh cab air filter
- Sound suppression cab

Optional

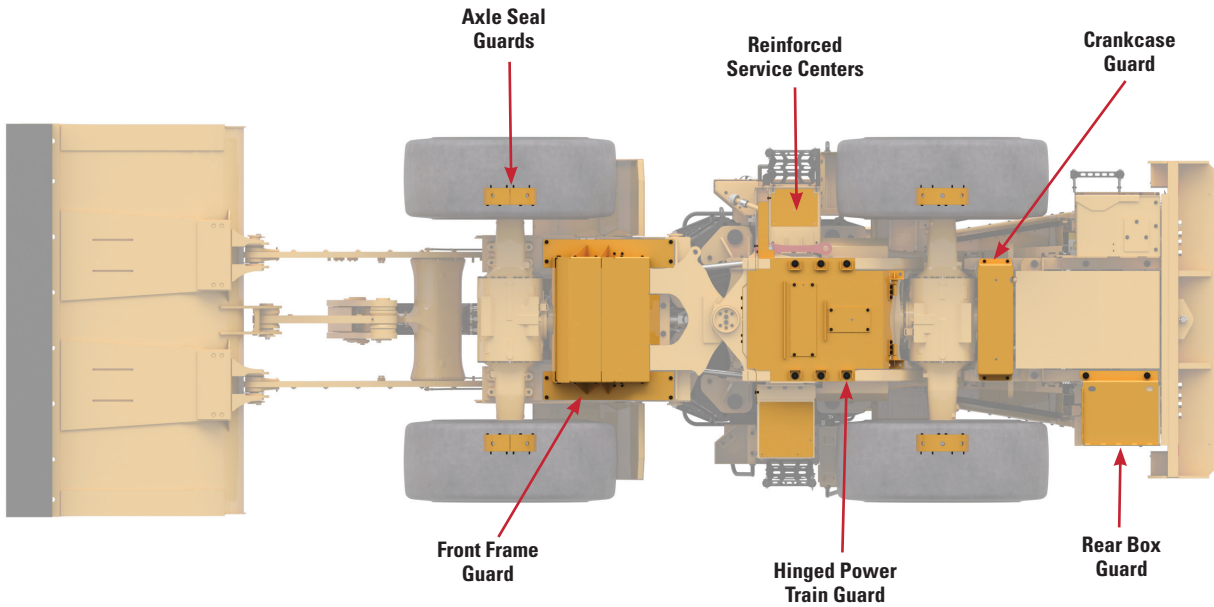
- High Lift linkage
- Auto locking differential front axle
- 3rd function hydraulics
- Premium LED lights
- Rubber mounted glass
- Windshield guard
- Deluxe seat with dynamic end dampening
- Joystick loader controls
- Powered and filtered cab precleaner
- High debris cooling coolers
- Variable pitch fan
- Brawler HPS Solid tires (traction or smooth)
- Turbine engine air precleaner with trash screen
- Autolube
- Cat Integrated Object Detection
- Light guards

Top Machine Guarding – Standard

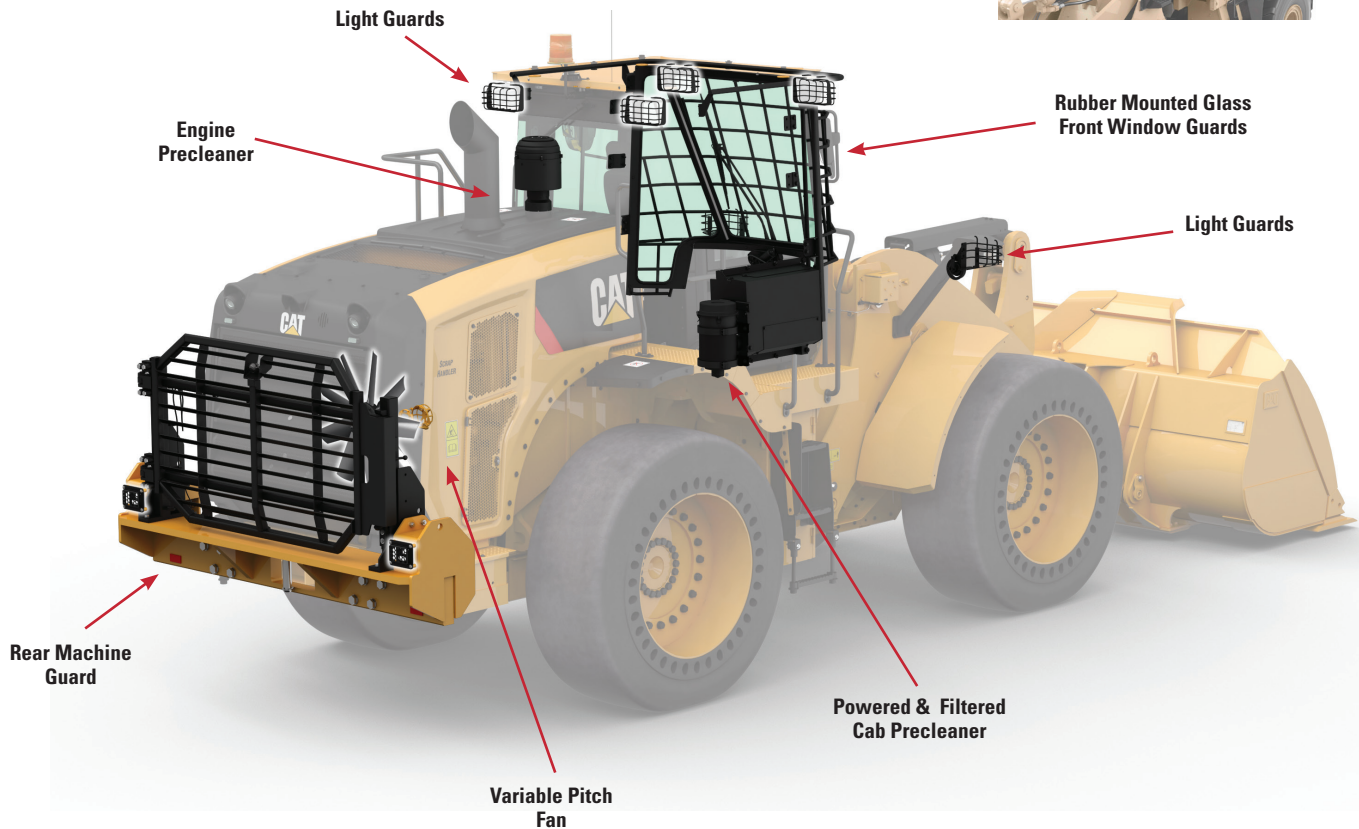
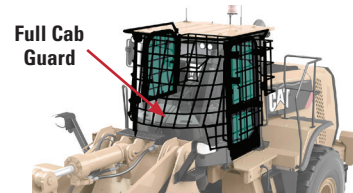


966L Industrial & Waste Standard & Optional Equipment

Bottom Machine Guarding – Standard



Optional Full Cab Guarding – Available





966L

Forestry

Millyard applications demand the additional performance, productivity, and safety that Cat Forestry Wheel Loaders deliver.

Durability

- Robotically welded frame design provides rigid structures that absorb torsional loads.
- L Series articulating hitch design provides increased bearing force capacity to handle heavy loads.
- Heavy-duty transmissions and axles are designed to handle steep grades and ramps.

Productivity

- Larger tilt cylinder and Logger implement valve coupled with Logger counterweight increase machine capacity 19% over standard machine.
- Lock-up clutch transmission matches the engine power to increase fuel efficiency while delivering optimal performance.
- Optional Cat Fusion quick coupler and 3rd valve hydraulic functions provide versatility between forks and buckets.
- Automatic idle engine shutdown system significantly reduces idle time, overall operating hours, and fuel consumption.
- Standard manual locking front differential optimizes traction in all conditions. In partially paved yards, tire wear is minimized.
- Variable pitch fan and high debris coolers minimize power train overheating and reduce downtime for radiator clean out.

Safety

- Cab access with wide door and stair-like steps adds solid stability.
- Floor-to-ceiling windshield, large mirrors with integrated spot mirrors, and rear vision camera provide industry-leading all-around visibility.
- Rear vision camera enhances visibility behind the machine, helping you work safely and confidently.

Operator Environment

- Sound-suppression, seals, and viscous cab mounts decrease noise and vibration for a quieter work environment.
- Convenient door latch enables personnel to keep feet on the ground while opening the cab door.

Reduced Maintenance Time and Costs

- Service centers enhance convenience and accessibility.
- Easy access to fuel fill and daily maintenance points means less servicing time is required.
- Remote flash support.
- Optional integrated Cat autolube system provides full lube system monitoring and diagnostic test visibility.
- Integrated window cleaning platform with tie-off point allows easy and safe access to the front of the machine.

966L Forestry Specifications

Engine		
Engine Model	Cat C9.3	
Maximum Power @ 1,700 rpm		
ISO 14396	227 kW	309 hp (metric)
Maximum Net Power @ 1,700 rpm		
ISO 9249	207 kW	281 hp (metric)
Peak Torque (1,200 rpm)		
ISO 14396	1581 N·m	
Maximum Net Torque (1,000 rpm)		
ISO 9249	1507 N·m	
Bore	115 mm	
Stroke	149 mm	
Displacement	9.3 L	

- Cat engine with ACERT Technology – based on local requirements, meets China Nonroad Stage III emission standards (equivalent to U.S. EPA Tier 3 and EU Stage IIIA).
- The power ratings apply at the stated speed when tested under the reference conditions for the specified standards.
- The net power advertised is the power available at the flywheel when the engine is equipped with fan, alternator, air cleaner and aftertreatment.
- The gross power advertised is with the fan at maximum speed.

Transmission		
Forward 1	6.5 km/h	4.0 mph
Forward 2	13.0 km/h	8.1 mph
Forward 3	23.5 km/h	14.6 mph
Forward 4	39.5 km/h	24.5 mph
Reverse 1	7.1 km/h	4.4 mph
Reverse 2	14.4 km/h	8.9 mph
Reverse 3	25.9 km/h	16.1 mph
Reverse 4	39.5 km/h	24.5 mph

- Maximum travel speed in standard vehicle with empty bucket and standard L3 tires with 826 mm (32.5 in) roll radius.

Brakes

Brakes	Brakes meet ISO 3450:2011 standards
--------	-------------------------------------

Hydraulic System

Implement Pump Type	Variable Displacement Piston	
Implement System		
Maximum Pump Output (2,200 rpm)	360 L/min	95 gal/min
Maximum Operating Pressure	31 000 kPa	4,496 psi
Optional 3 rd /4 th Function Maximum Flow	240 L/min	63 gal/min
Optional 3 rd /4 th Function Maximum Pressure	21 780 kPa	3,159 psi
Hydraulic Cycle Time with Rated Payload		
Raise from Carry Position	6.1 Sec.	
Dump, at Maximum Raise	1.4 Sec.	
Lower, Empty, Float Down	2.6 Sec.	
Total	10.1 Sec.	

Axles

Front	Fixed	
Rear	Oscillating ±13 degrees	
Maximum Single-Wheel Rise and Fall	502 mm	19.5 in

Cab

ROPS/FOPS	ROPS/FOPS meet ISO 3471:2008 and ISO 3449:2005 Level II standards
-----------	---

Sound

The sound values indicated below are for specific operating conditions only. Machine and operator sound levels will vary at different engine and/or cooling fan speeds. Hearing protection may be needed when the machine is operated with a cabin that is not properly maintained, or when the doors and/or windows are open for extended periods or in a noisy environment.

With Cooling Fan Speed at Maximum Value:

Operator Sound Pressure Level (ISO 6396:2008)	72 dB(A)
Exterior Sound Power Level (ISO 6395:2008)	109 dB(A)
Exterior Sound Pressure Level (SAE J88:2013)	76 dB(A)*
With Cooling Fan Speed at 70 % of Maximum Value**:	
Operator Sound Pressure Level (ISO 6396:2008)	69 dB(A)
Exterior Sound Power Level (ISO 6395:2008)	108 L _{WA} ***

*Distance of 15 m, moving forward in second gear ratio.

**For machines in countries that adopt the "EU Directives."

***European Union Directives "2000/14/EC" as amended by "2005/88/EC."

- Compliance to ISO 14397-1:2007 Sections 1 thru 5.

Service Refill Capacities

Fuel Tank	302.0 L	79.8 gal
Cooling System	71.6 L	18.9 gal
Crankcase	24.5 L	6.5 gal
Transmission	58.5 L	15.5 gal
Differentials and Final Drives – Front	57.0 L	15.1 gal
Differentials and Final Drives – Rear	57.0 L	15.1 gal
Hydraulic Tank	125 L	33.0 gal

966L Forestry Specifications

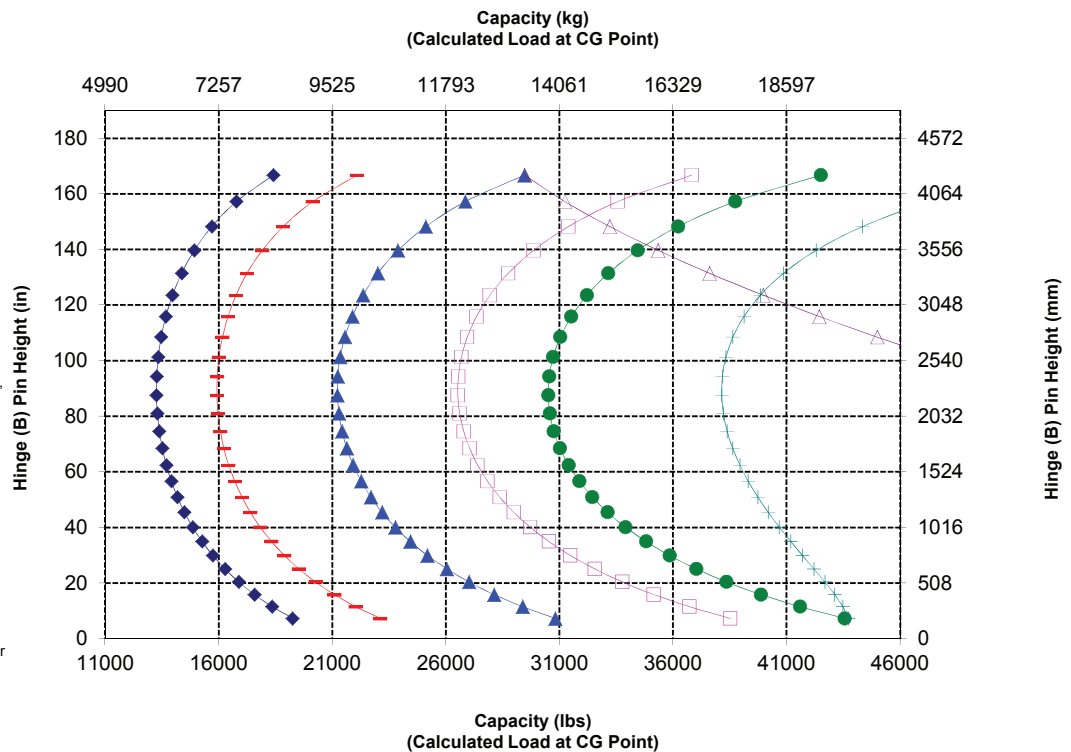
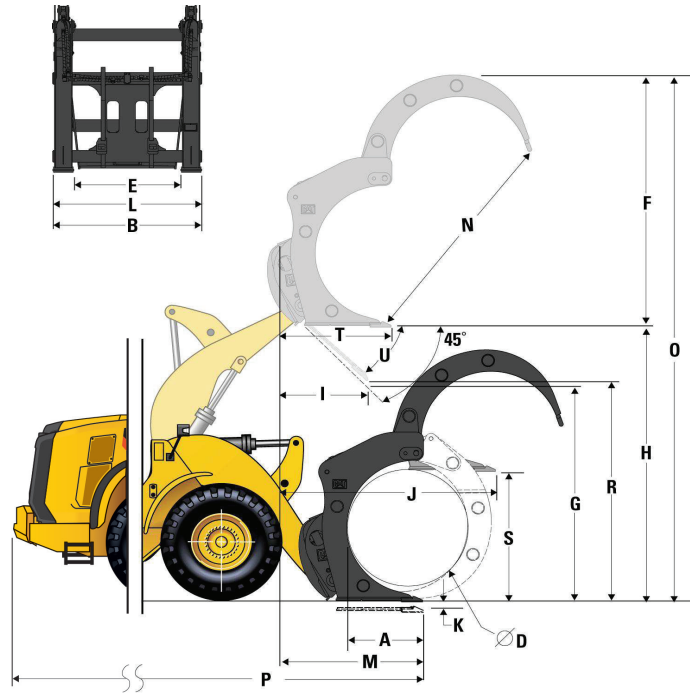
Dimension Changes – Tires

Tire Brand	Michelin	Michelin	Michelin	Bridgestone	Bridgestone	Bridgestone	Triangle
Tire Size	25.5R25	26.5R25	26.5R25	26.5R25	26.5R25	775/65R25	26.5R25
Tread Type	L-4	L-5	L-5	L-3	L-5	L-3	L-3
Tread Pattern	XLDD1	XLDD2	XMINED2	VJT	VSDL	VTS	TB516
Width over Tires – Maximum (empty)*	2987 mm	2986 mm	2970 mm	2982 mm	2874 mm	3080 mm	2971 mm
Width over Tires – Maximum (loaded)*	3019 mm	3011 mm	2994 mm	3016 mm	2900 mm	3101 mm	2999 mm
Change in Vertical Dimensions (average of front and rear)	44 mm	39 mm	53 mm	15 mm	50 mm	17 mm	24 mm
Change in Horizontal Reach	-36 mm	-34 mm	-32 mm	-3 mm	-29 mm	-5 mm	-9 mm
Change in Clearance Circle (radius) to Outside of Tires	5 mm	1 mm	-7 mm	3 mm	-54 mm	46 mm	-5 mm
Change in Clearance Circle (radius) to Inside of Tires	-5 mm	-1 mm	7 mm	-3 mm	54 mm	-46 mm	5 mm
Change in Operating Weight (without ballast)	420 kg	716 kg	1068 kg	164 kg	1136 kg	856 kg	100 kg
Change in Static Tipping Load – Straight	303 kg	517 kg	771 kg	118 kg	821 kg	618 kg	72 kg
Change in Static Tipping Load – Articulated	271 kg	461 kg	688 kg	106 kg	732 kg	551 kg	64 kg

*Width over bulge and includes tire growth.

Grapple Fork – Pin-On

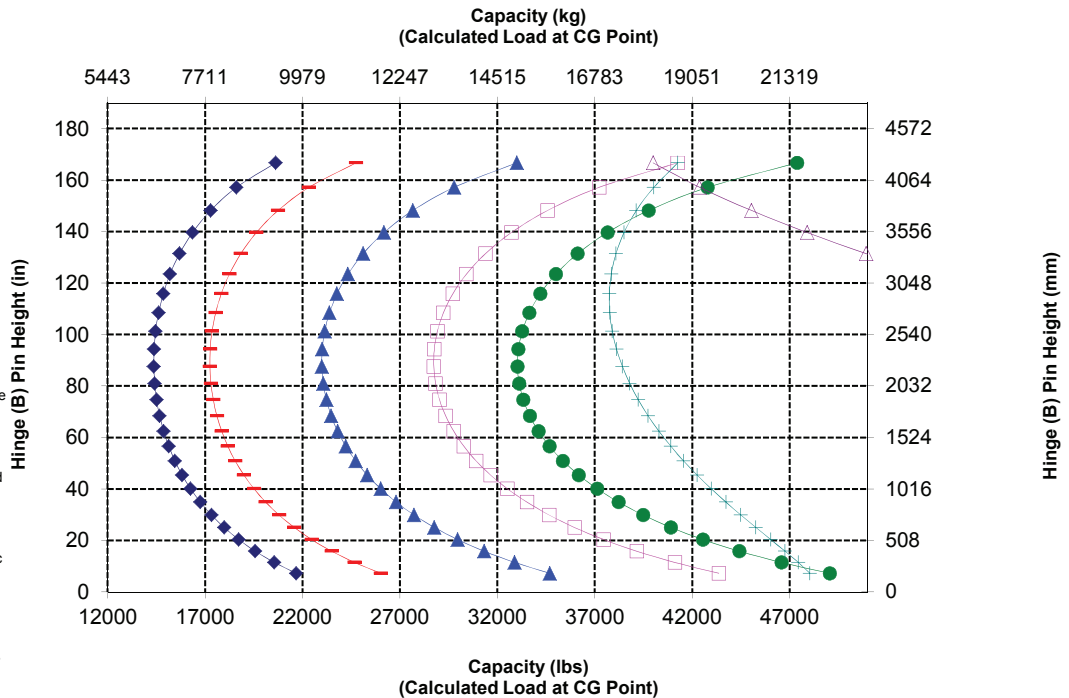
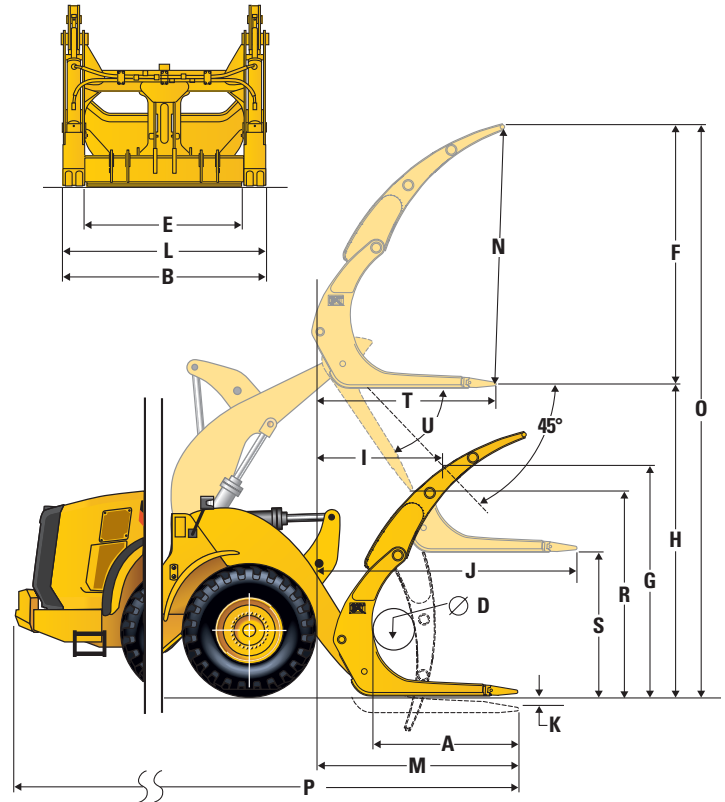
A Tine length	mm	1221
	in	48.1
B Fork width	mm	1943
	in	76.5
End area	m ²	3.1
	ft ²	33
C Inside Height (only applies to double top clamp)	mm	0
	in	0
D Min. opening (only applies to millyard forks)	mm	N/A
	in	N/A
Operating Weight	kg	24703
	lbs	54459
E Distance inside of tine tips	mm	1402
	in	55
Static tipping load, articulated Fork level	kg	12034
	lbs	26530.7
Static tipping load, straight Fork level	kg	13840
	lbs	30510.8
F Max. height of fork (w/clamp open if applicable)	mm	3762
	in	148.1
G Clearance w/full lift, 45 deg dump (if max. dump <= 45)	mm	3076
	in	121.1
H Clearance @ full lift fork level	mm	3915
	in	154.2
I Reach w/full lift, 45 deg dump (if max. dump <= 45)	mm	1106
	in	43.5
J Reach w/lift arm horizontal and fork level	mm	2587
	in	101.8
K Digging depth	mm	-135
	in	-5.3
L Width over tines	mm	1938
	in	76.3
M Reach @ ground level	mm	1945
	in	77
N Max. opening across tine and clamp	mm	3465
	in	136.4
O Overall height of fork @ full lift and clamp open	mm	7677
	in	302.3
P Overall length Tip of tine to rear of machine	mm	8861
	in	348.9
R Clearance @ full lift and max. dump Discharge (if <= 45)	mm	3078
	in	121.2
S Clearance w/horizontal lift arms and fork level	mm	1832.0
	in	72.1
T Reach @ full lift and fork level	mm	1719.2
	in	67.7
U Max. discharge angle from horizontal	deg	45
	rad	0.8



966L Forestry Specifications

Millyard Fork – Pin-On

A Tine length	mm	1611
	in	63.4
B Fork width	mm	2508
	in	98.8
End area	m ²	1.59
	ft ²	17
C Inside Height (only applies to double top clamp)	mm	0
	in	0
D Min. opening (only applies to millyard forks)	mm	662
	in	26
Operating Weight	kg	24955
	lbs	55015
E Distance inside of tine tips	mm	1907
	in	75
Static tipping load, articulated Fork level	kg	13032
	lbs	28730.0
Static tipping load, straight Fork level	kg	14982
	lbs	33028.3
F Max. height of fork (w/clamp open if applicable)	mm	2805
	in	110.4
G Clearance w/full lift, 45 deg dump (if max. dump <= 45)	mm	2847
	in	112.1
H Clearance @ full lift fork level	mm	3971
	in	156.3
I Reach w/full lift, 45 deg dump (if max. dump <= 45)	mm	1413
	in	55.6
J Reach w/lift arm horizontal and fork level	mm	2965
	in	116.7
K Digging depth	mm	-79
	in	-3.1
L Width over tines	mm	2413
	in	95.0
M Reach @ ground level	mm	2278
	in	90
N Max. opening across tine and clamp	mm	2727
	in	107.4
O Overall height of fork @ full lift and clamp open	mm	6776
	in	266.8
P Overall length Tip of tine to rear of machine	mm	9194
	in	362.0
R Clearance @ full lift and max. dump Discharge (if <= 45)	mm	2851
	in	112.2
S Clearance w/horizontal lift arms and fork level	mm	1887.8
	in	74.3
T Reach @ full lift and fork level	mm	2098.0
	in	82.6
U Max. discharge angle from horizontal	deg	45
	rad	0.8



NOTE: Static tipping loads and operating weight are based on the following loader configuration: L3 Michelin XHA Tires, Air Conditioning, Ride Control, Powertrain Guard, Full Fluids, Fuel Tank, Coolant, Lubricants, and Operator.

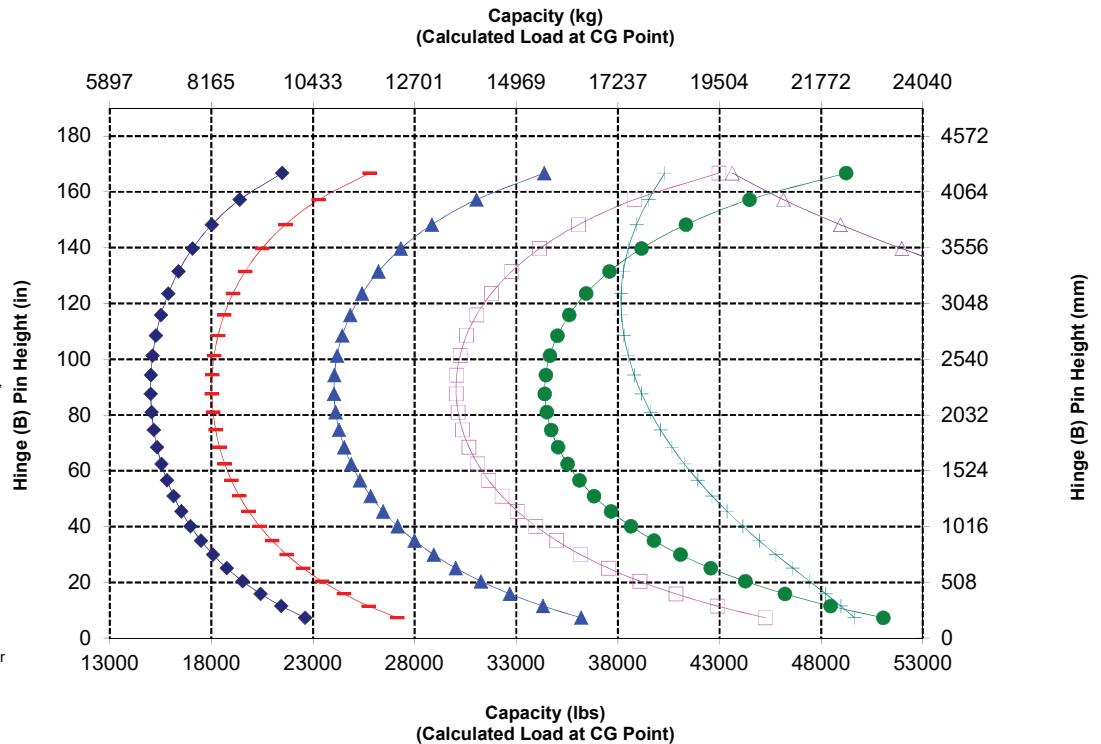
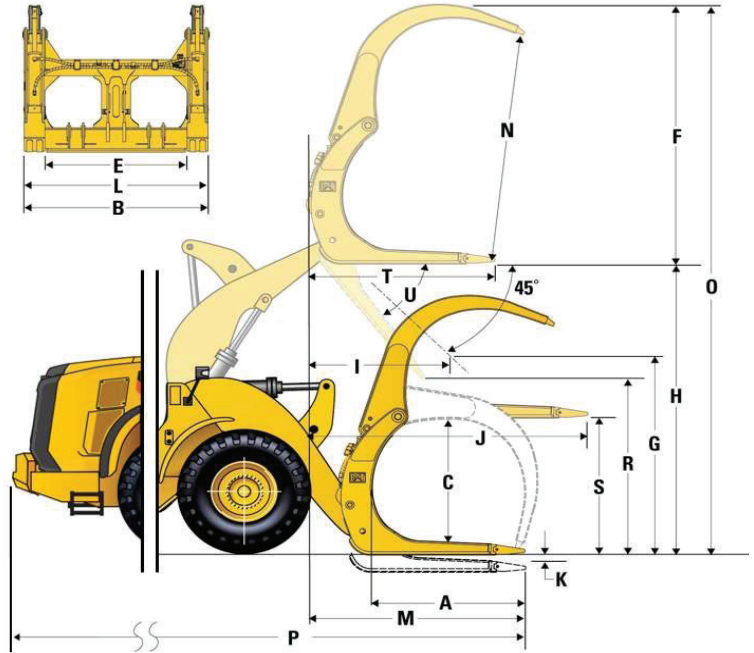
Specifications and ratings conform to the following standards: SAE* J1197, SAE J732, CEN** EN 474-3.

The rated operating load for a loader equipped with a pallet fork is determined by:
 SAE J1197: 50% of full turn static tipping load or hydraulic limit.
 CEN EN 474-3: 60% of full turn static tipping load on rough terrain or hydraulic limit.
 CEN EN 474-3: 80% of full turn static tipping load on firm and level ground or hydraulic limit.

*SAE - Society of Automotive Engineers
 **CEN - European Committee for Standardization

Logging Fork, Grapple – Pin-On

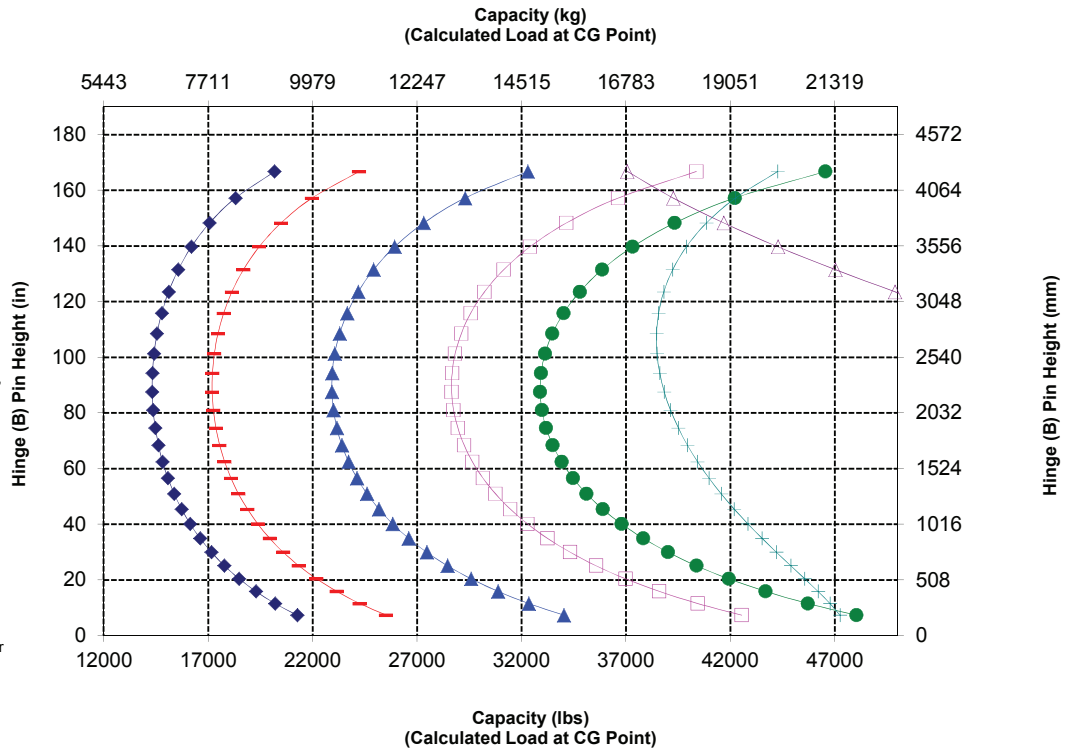
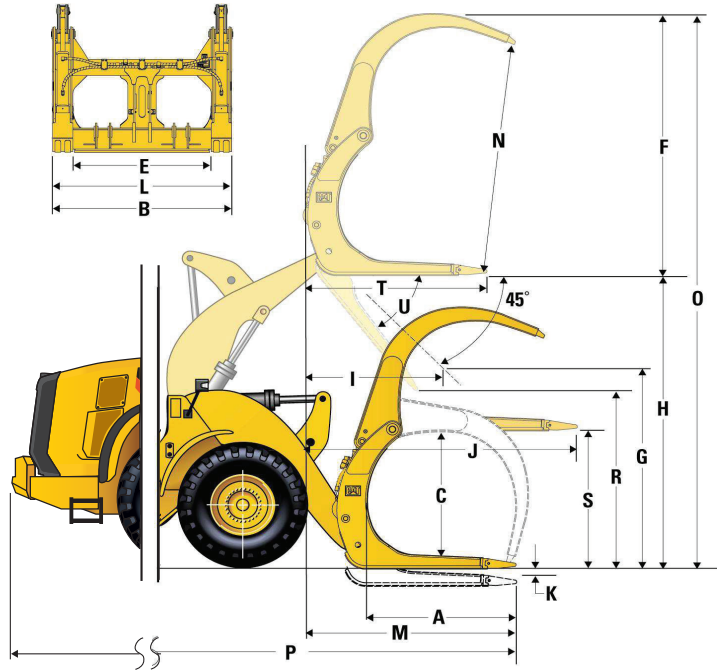
A Tine length	mm	1611
	in	63.4
B Fork width	mm	2500
	in	98.4
End area	m ²	1.42
	ft ²	15
C Inside Height (only applies to double top clamp)	mm	1259
	in	50
D Min. opening (only applies to millyard forks)	mm	N/A
	in	N/A
Operating Weight	kg	24651
	lbs	54345
E Distance inside of tine tips	mm	1892
	in	74
Static tipping load, articulated Fork level	kg	13627
	lbs	30041.6
Static tipping load, straight Fork level	kg	15605
	lbs	34402.9
F Max. height of fork (w/clamp open if applicable)	mm	2700
	in	106.3
G Clearance w/full lift, 45 deg dump (if max. dump <= 45)	mm	2847
	in	112.1
H Clearance @ full lift fork level	mm	3971
	in	156.3
I Reach w/full lift, 45 deg dump (if max. dump <= 45)	mm	1413
	in	55.6
J Reach w/lift arm horizontal and fork level	mm	2965
	in	116.7
K Digging depth	mm	-79
	in	-3.1
L Width over tines	mm	2414
	in	95.0
M Reach @ ground level	mm	2278
	in	90
N Max. opening across tine and clamp	mm	2493
	in	98.1
O Overall height of fork @ full lift and clamp open	mm	6670
	in	262.6
P Overall length Tip of tine to rear of machine	mm	9194
	in	362.0
R Clearance @ full lift and max. dump Discharge (if <= 45)	mm	2939
	in	115.7
S Clearance w/horizontal lift arms and fork level	mm	1887.5
	in	74.3
T Reach @ full lift and fork level	mm	2097.8
	in	82.6
U Max. discharge angle from horizontal	deg	40
	rad	0.7



966L Forestry Specifications

Logging Fork, Double Clamp – Pin-On

A Tine length	mm	1609
	in	63.4
B Fork width	mm	2498
	in	98.3
End area	m ²	1.91
	ft ²	21
C Inside Height (only applies to double top clamp)	mm	1376
	in	54
D Min. opening (only applies to millyard forks)	mm	N/A
	in	N/A
Operating Weight	kg	24686
	lbs	54422
E Distance inside of tine tips	mm	1892
	in	74
Static tipping load, articulated Fork level	kg	12998
	lbs	28655.7
Static tipping load, straight Fork level	kg	14919
	lbs	32890.4
F Max. height of fork (w/clamp open if applicable)	mm	2943
	in	115.9
G Clearance w/full lift, 45 deg dump (if max. dump <= 45)	mm	2849
	in	112.1
H Clearance @ full lift fork level	mm	3971
	in	156.3
I Reach w/full lift, 45 deg dump (if max. dump <= 45)	mm	1412
	in	55.6
J Reach w/lift arm horizontal and fork level	mm	2963
	in	116.7
K Digging depth	mm	-79
	in	-3.1
L Width over tines	mm	2414
	in	95.0
M Reach @ ground level	mm	2276
	in	90
N Max. opening across tine and clamp	mm	2542
	in	100.1
O Overall height of fork @ full lift and clamp open	mm	6915
	in	272.2
P Overall length Tip of tine to rear of machine	mm	9192
	in	361.9
R Clearance @ full lift and max. dump Discharge (if <= 45)	mm	2852
	in	112.3
S Clearance w/horizontal lift arms and fork level	mm	1887.7
	in	74.3
T Reach @ full lift and fork level	mm	2095.8
	in	82.5
U Max. discharge angle from horizontal	deg	45
	rad	0.8



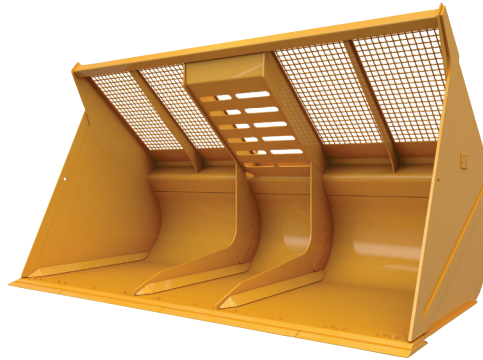
NOTE: Static tipping loads and operating weight are based on the following loader configuration: L3 Michelin XHA Tires, Air Conditioning, Ride Control, Powertrain Guard, Full Fluids, Fuel Tank, Coolant, Lubricants, and Operator.

Specifications and ratings conform to the following standards: SAE* J1197, SAE J732, CEN** EN 474-3.

The rated operating load for a loader equipped with a pallet fork is determined by:
SAE J1197: 50% of full turn static tipping load or hydraulic limit.
CEN EN 474-3: 60% of full turn static tipping load on rough terrain or hydraulic limit.
CEN EN 474-3: 80% of full turn static tipping load on firm and level ground or hydraulic limit.

*SAE - Society of Automotive Engineers
**CEN - European Committee for Standardization

Woodchip Buckets – Pin-On and Fusion



Package	966L Logger	
Bucket Type	Pin-On	
Edge Type	Bolt-On Cutting Edges	
Capacity – Rated	m ³	9.9
Capacity – Rated at 110% Fill Factor	m ³	10.9
Width	mm	4013
Dump Clearance at Maximum Lift and 45° Discharge	mm	2635
Reach at Maximum Lift and 45° Discharge	mm	1502
Reach at Level Lift Arm and Bucket Level	mm	3178
Digging Depth	mm	131
Overall Length	mm	9477
Overall Height with Bucket at Maximum Lift	mm	6400
Loader Clearance Circle Radius with Bucket at Carry Position	mm	15 969
Static Tipping Load, Straight, with Tire Squash	kg	19 925
Static Tipping Load, Straight, without Tire Squash	kg	21 552
Static Tipping Load, Articulated, with Tire Squash	kg	17 363
Static Tipping Load, Articulated, without Tire Squash	kg	19 008
Breakout Force	kN	178
Operating Weight	kg	24 759

966L Forestry Standard and Optional Equipment

Standard and Optional Equipment

Standard and optional equipment may vary. Consult your Cat dealer for details.

	Standard	Optional		Standard	Optional
POWER TRAIN			OPERATOR ENVIRONMENT		
Axles, open differential, front and rear	✓		Air conditioner, heater, and defroster	✓	
Axles – automatic front/rear differential locks, axle oil cooler, ecology drains, extreme temperature seals, seal guards		✓	Beverage holders (2) with storage compartment for cell phone/MP3 player	✓	
Brake wear indicators	✓		Bucket/work tool function lockout	✓	
Brakes, full hydraulic enclosed wet-disc with Integrated Braking System (IBS)	✓		Cab air filter	✓	
Economy mode (productive)	✓		Cab, pressurized and sound suppressed (ROPS/FOPS)	✓	
Engine, Cat C9.3 – meets China Nonroad Stage III emission standards (equivalent to U.S. EPA Tier 3/EU Stage IIIA)	✓		Coat hook	✓	
Fan, radiator, electronically controlled, hydraulically driven, temperature sensing, on demand	✓		Cover, HVAC metallic		✓
Fan, VPF (variable pitch fan), automatic and manual control		✓	EH controls, SAL (single axis lever) lift and tilt function	✓	
Fuel priming pump (electric)	✓		EH controls, joystick lift and tilt – additional integrated roller switches for 3 rd function		✓
Fuel/water separator	✓		EH controls, SAL 3 rd function		✓
Parking brake, disc and caliper	✓		EH parking brake	✓	
Precleaner, engine air intake	✓		Ergonomic cab access ladders and handrails	✓	
Radiator, high debris with wider fin spacing		✓	Horn, electric	✓	
Switch, transmission neutralizer lockout	✓		Light, two dome (cab)	✓	
Torque converter, locking clutch with free wheel stator	✓		Mirrors, heated rearview external with integrated spot mirrors		✓
Transmission, automatic planetary power shift (4F/4R)	✓		Mirrors, rearview external with integrated spot mirrors	✓	
CAT TECHNOLOGY			Post mounted membrane 16 switch keypad	✓	
Detect technologies:			Precleaner, HVAC		✓
Rear vision camera	✓		Radio, AM/FM/USB/MP3 Bluetooth		✓
Cat rear object detection		✓	Radio, AM/FM/CD/USB/MP3 Bluetooth		✓
Link technologies:			Radio, CB ready		✓
Product Link	✓		Radio ready (entertainment) includes antenna, speakers and converter (12V, 10-amp)	✓	
VIMS		✓	Rear vision camera within multi-function 18 cm color LCD touchscreen display (capability for displaying machine status setting and health parameters)	✓	
Payload technologies: Cat Production Measurement 2.0, Printer, Aggregate Autodig		✓	Receptacles (2), 12V	✓	
Machine security system		✓			

(continued on next page)

966L Forestry Standard and Optional Equipment

Standard and Optional Equipment *(continued)*

Standard and optional equipment may vary. Consult your Cat dealer for details.

	Standard	Optional
OPERATOR ENVIRONMENT <i>(continued)</i>		
Roof, metallic		✓
Seat, Cat Comfort (cloth) air suspension	✓	
Seat, air suspension, heated		✓
Seat belt, 51 mm (2 in) retractable	✓	
Seat belt, 76 mm (3 in) retractable, with indicator		✓
Steering, secondary		✓
Steering, steering wheel	✓	
Sun visor, front	✓	
Sun visor, rear		✓
Viscous mounts	✓	
Wet-arm wipers/washers front and rear, intermittent front wiper	✓	
Windows, rubber mounted		✓
Window, sliding (left and right sides)	✓	
Windows, with front guard		✓
Windows, with full guards front, rear and sides		✓
Work Area Vision System (WAVS), full time rear vision display		✓
ELECTRICAL AND LIGHTING		
Alarm, back-up	✓	
Alternator, 145-amp brushed	✓	
Auxiliary halogen cab-mounted work lights (four additional) or		✓
Auxiliary front HI LED (two additional) and two additional auxiliary rear LED cab mounted work lights with two LED work lights in the radiator grill and LED front turn signals. Also includes replacement of the standard four halogen cab-mounted work lights with four LED work lights (the standard offering and only roading light available is the halogen roading light)		✓
Batteries (2), maintenance free 1,400 CCA	✓	
Ignition key; start/stop switch	✓	
LED stop, turn, tail lights (2)		✓
Lighting system: four halogen work lights (cab mounted), two halogen rear vision lights (hood mounted)	✓	

	Standard	Optional
ELECTRICAL AND LIGHTING <i>(continued)</i>		
Main disconnect switch	✓	
Receptacle start (cables not included)	✓	
Starter, electric, heavy duty	✓	
Starting and charging system (24V)	✓	
Warning amber strobe beacon		✓
FLUIDS		
Premixed extended life coolant with freeze protection to -34°C (-29°F)	✓	
Premixed extended life coolant with freeze protection to -50°C (-58°F)		✓
HYDRAULICS		
Couplings, Cat O-ring face seal	✓	
Hoses, Cat XT	✓	
Hydraulic oil cooler (swing out)	✓	
Hydraulic system, load sensing	✓	
Oil sampling valves	✓	
3 rd function with Ride Control – standard linkage, high lift linkage, forestry linkage		✓
Remote diagnostic pressure taps	✓	
Ride control, 2V		✓
Steering, load sensing	✓	
LINKAGE		
Autolube		✓
Forestry		✓
High lift		✓
Kickout, lift and tilt, automatic (adjustable in cab)	✓	
Quick coupler ready		✓
Z-bar, cast crosstube/tilt lever	✓	
STARTERS, BATTERIES, AND ALTERNATORS		
Cold start – 240V		✓
WORK TOOLS		
Forks, logging		✓
Forks, pallet		✓
Fusion quick coupler		✓
Performance Series buckets		✓

(continued on next page)

966L Forestry Standard and Optional Equipment

Standard and Optional Equipment *(continued)*

Standard and optional equipment may vary. Consult your Cat dealer for details.

	Standard	Optional		Standard	Optional
COMPUTERIZED MONITORING SYSTEM			OTHER STANDARD AND OPTIONAL EQUIPMENT <i>(continued)</i>		
With following gauges:	✓		Fenders, front	✓	
Speedometer/tachometer			Fenders, roading		✓
Digital gear range indicator			Filters: fuel, engine air, engine oil, hydraulic oil, transmission	✓	
Temperature: engine coolant, hydraulic oil, transmission oil			Grease zerks	✓	
Fuel level			Grill, airborne debris	✓	
With following warning indicators:	✓		Guard, power train		✓
Temperature: axle oil, engine intake manifold			Hitch, drawbar with pin	✓	
Pressure: engine oil, fuel pressure hi/low, primary steering oil, service brake oil			Hood, non-metallic power tilting	✓	
Battery voltage hi/low			Platform, window washing		✓
Engine air filter restriction			Precleaner, turbine		✓
Hydraulic oil filter restriction			Precleaner, trash		✓
Hydraulic oil low			Precleaner rain cap	✓	
Parking brake			Service centers (electrical and hydraulic)	✓	
Transmission filter bypass			Sight gauges: engine coolant, hydraulic oil, and transmission oil level	✓	
OTHER STANDARD AND OPTIONAL EQUIPMENT			Toolbox	✓	
Auto idle shutdown	✓		Vandalism protection caplocks	✓	
Cat Autolube System		✓	OTHER CONFIGURATIONS		
Cold weather package: transmission filter bypass, fan pump bypass, jacket water or engine block heater, ether aid ready		✓	Block handler		✓
Ecology drains for engine, transmission, and hydraulics	✓		Industrial and waste handler		✓
			Forestry		✓
			Port and harbor		✓

966L Forestry Standard and Optional Equipment

Recommended Equipment and Work Tools

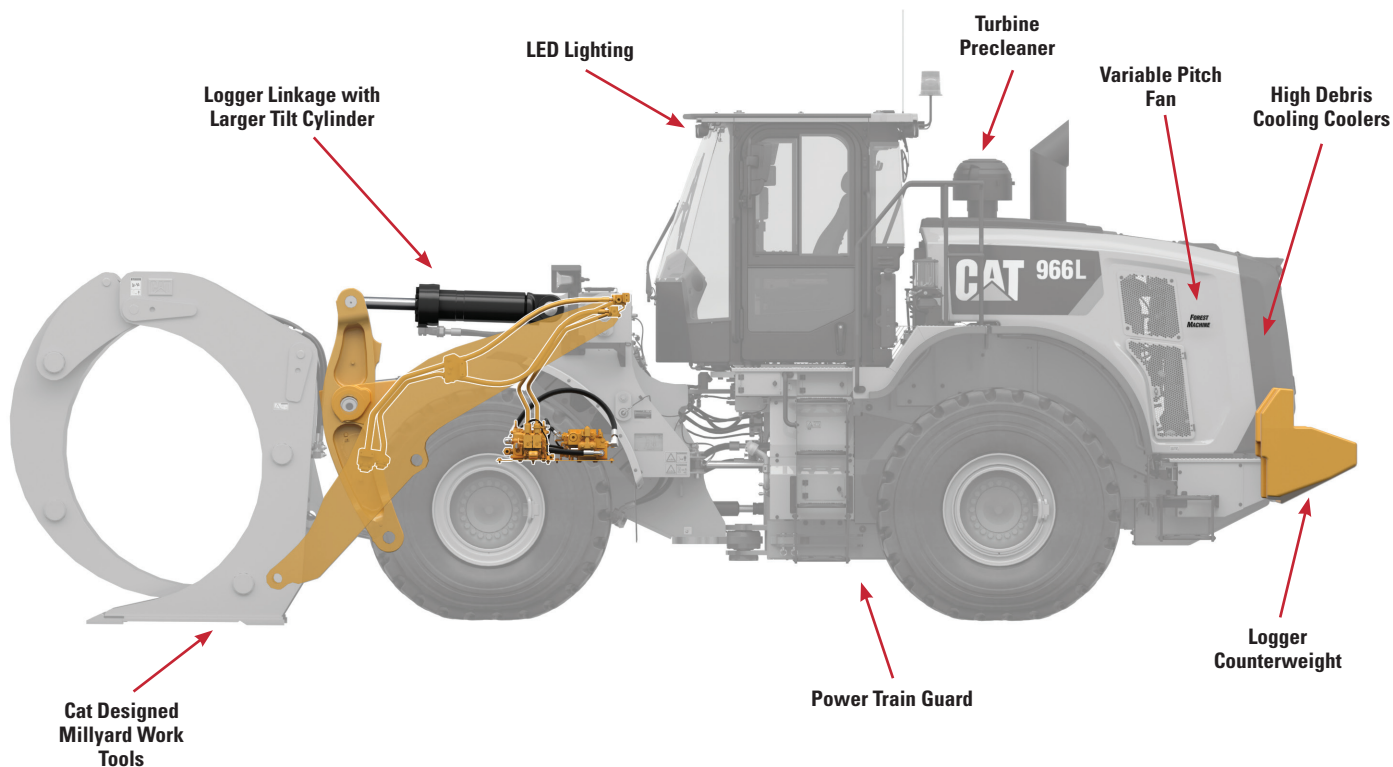
Recommended Forestry Configuration

- Logger linkage with larger tilt cylinder
- Logger counterweight
- 3rd function hydraulics
- Ride control
- Turbine engine precleaner
- LED lighting package
- Locking differential front axle
- Windshield guard
- Power train guard
- Suspension seat with dynamic dampening
- Variable pitch fan
- High debris cooling coolers
- Autolube
- Object detection
- Fusion

Millyard Work Tools

- Sorting grapple forks
- Millyard forks
- Logging forks
- Woodchip buckets

966L Forestry Machine





オフロード法2014年
基準適合



For more complete information on Cat products, dealer services, and industry solutions, visit us on the web at www.cat.com.

Materials and specifications are subject to change without notice. Featured machines in photos may include additional equipment. See your Cat dealer for available options.

© 2020 Caterpillar. All Rights Reserved. CAT, CATERPILLAR, LET'S DO THE WORK, their respective logos, ACERT, Product Link, VIMS, XT, Fusion, "Caterpillar Corporate Yellow", the "Power Edge" and Cat "Modern Hex" trade dress as well as corporate and product identity used herein, are trademarks of Caterpillar and may not be used without permission.

AEXQ2922-01 (6-2020)
2020 Product Update
Global excluding EU

