

Caterpillar is leading the power generation marketplace with Power Solutions engineered to deliver unmatched flexibility, expandability, reliability, and cost-effectiveness.

Specifications

Generator Set Specifications	
Minimum Rating	591 ekW (680 kVA)
Maximum Rating	800 ekW (900 kVA)
Voltage	208 to 600 Volts
Frequency	50 or 60 Hz
Speed	1500 or 1800 RPM

Generator Set Configurations	
Emissions/Fuel Strategy	Low Fuel Consumption

Engine Specifications		
Engine Model	3412C TA, V-12, 4-Stroke Water-Cooled Diesel	
Compression Ratio	13:0:1	
Aspiration	TA	
Governor Type	ADEM™ A5	
Fuel System	Pump and Lines	
Bore	137.2 mm	5.4 in
Displacement	27.02 L	1648.86 in ³
Stroke	152.4 mm	6 in

Benefits And Features

Cat Diesel Engine

- Reliable, rugged, durable design
- Field-proven in thousands of applications worldwide
- Four-stroke-cycle diesel engine combines consistent performance and excellent fuel economy with minimum weight

Generator

- Matched to the performance and output characteristics of Cat engines
- Industry leading mechanical and electrical design
- Industry leading motor starting capabilities
- High Efficiency

Cat EMCP Control Panel

The EMCP controller features the reliability and durability you have come to expect from your Cat equipment. EMCP4 is a scalable control platform designed to ensure reliable generator set operation, providing extensive information about power output and engine operation. EMCP4 systems can be further customized to meet your needs through programming and expansion modules.

Design Criteria

The generator set accepts 100% rated load in one step per NFPA 110 and meets ISO 8528-5 transient response.

UL 2200 / CSA - Optional

- UL 2200 listed packages
- CSA Certified
- Certain restrictions may apply.
- Consult with your Cat® Dealer.

Single-Source Supplier

Fully prototype tested with certified torsional vibration analysis available

World Wide Product Support

Cat dealers provide extensive post-sale support including maintenance and repair agreements. Cat dealers have over 1,800 dealer branch stores operating in 200 countries. The Caterpillar S•O•SSM program cost effectively detects internal engine component condition, even the presence of unwanted fluids and combustion by-products

Standard Equipment

Air Inlet

- Air Cleaner

Cooling

- Package mounted radiator

Exhaust

- Exhaust flange outlet

Fuel

- Primary fuel filter with integral water separator
- Secondary fuel filter
- Fuel priming pump

Generator

- Matched to the performance and output characteristics of Cat engines
- Load adjustment module provides engine relief upon load impact and improves load acceptance and recovery time
- IP23 Protection

Power Termination

- Bus Bar

Control Panel

- EMCP 4 Genset Controller

General

- Paint - Caterpillar Yellow except rails and radiators gloss black

Optional Equipment

Exhaust

- Exhaust mufflers

Generator

- Anti-condensation heater
- Internal excitation (IE)
- Permanent magnet excitation (PMG)
- Oversize and premium generators

Power Termination

- Circuit breakers, UL listed
- Circuit breakers, IEC compliant

Control Panels

- EMCP 4.2
- EMCP 4.3
- EMCP 4.4
- Generator temperature monitoring & protection
- Load share module
- Digital I/O module
- Remote monitoring software

Mounting

- Rubber anti-vibration mounts
- Spring-type vibration isolator
- IBC isolators

Starting/Charging

- Battery chargers
- Oversize batteries
- Jacket water heater
- Heavy-duty starting system
- Charging alternator
- Air starting motor with control and silencer

General

- The following options are based on regional and product configuration:
- Seismic Certification per applicable building codes: IBC 2000, IBC 2003, IBC 2006, IBC 2009, CBC 2007
- UL 2200 package
- EU Certificate of Conformance (CE)
- CSA Certification
- EEC Declaration of Conformity
- Enclosures: sound attenuated, weather protective
- Automatic transfer switches (ATS)
- Integral & sub-base fuel tanks
- Integral & sub-base UL listed dual wall fuel tanks



The International System of Units (SI) is used in this publication. CAT, CATERPILLAR, their respective logos, ADEM, EUI, S-O-S, "Caterpillar Yellow" and the "Power Edge" trade dress, as well as corporate and product identity used herein, are trademarks of Caterpillar and may not be used without permission.

3412C
700 ekW/ 875 kVA/ 60 Hz/ 1800 rpm/ 480 V/ 0.8 Power Factor

Rating Type: **STANDBY**

Fuel Strategy: **LOW FUEL CONSUMPTION**

3412C
700 ekW/ 875 kVA
60 Hz/ 1800 rpm/ 480 V

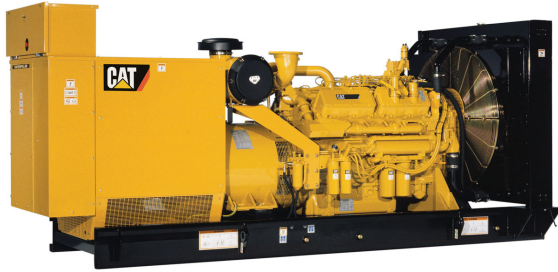


Image shown may not reflect actual configuration

Metric English

Package Performance

Genset Power Rating with Fan @ 0.8 Power Factor	700 ekW	
Genset Power Rating	875 kVA	
Aftercooler (Separate Circuit)	91.0 ° C	195.8 ° F

Fuel Consumption

100% Load with Fan	188.1 L/hr	49.7 gal/hr
75% Load with Fan	144.5 L/hr	38.2 gal/hr
50% Load with Fan	103.3 L/hr	27.3 gal/hr
25% Load with Fan	62.9 L/hr	16.6 gal/hr

Cooling System¹

Engine Coolant Capacity	58.6 L	15.5 gal
-------------------------	--------	----------

Inlet Air

Combustion Air Inlet Flow Rate	52.2 m ³ /min	1843.3 cfm
Max. Allowable Combustion Air Inlet Temp	91 ° C	195 ° F

Exhaust System

Exhaust Stack Gas Temperature	551.0 ° C	1023.8 ° F
Exhaust Gas Flow Rate	153.8 m ³ /min	5431.1 cfm
Exhaust System Backpressure (Maximum Allowable)	6.7 kPa	27.0 in. water



3412C
700 kW/ 875 kVA/ 60 Hz/ 1800 rpm/ 480 V/ 0.8 Power Factor

Rating Type: STANDBY

Fuel Strategy: LOW FUEL CONSUMPTION

Heat Rejection		
Heat Rejection to Jacket Water	434 kW	24682 Btu/min
Heat Rejection to Exhaust (Total)	700 kW	39810 Btu/min
Heat Rejection to Aftercooler	71 kW	4061 Btu/min
Heat Rejection to Atmosphere from Engine	108 kW	6142 Btu/min
Heat Rejection to Atmosphere from Generator	31 kW	1746 Btu/min

Alternator²	
Motor Starting Capability @ 30% Voltage Dip	1406 skVA
Current	1053 amps
Frame Size	595
Excitation	SE
Temperature Rise	130 ° C

Emissions (Nominal)³		
NOx	3936.3 mg/Nm ³	8.2 g/hp-hr
CO	321.6 mg/Nm ³	0.7 g/hp-hr
HC	29.7 mg/Nm ³	0.1 g/hp-hr
PM	45.2 mg/Nm ³	0.1 g/hp-hr

DEFINITIONS AND CONDITIONS

1. For ambient and altitude capabilities consult your Cat dealer. Air flow restriction (system) is added to existing restriction from factory.
2. UL 2200 Listed packages may have oversized generators with a different temperature rise and motor starting characteristics. Generator temperature rise is based on a 40° C ambient per NEMA MG1-32.
3. Emissions data measurement procedures are consistent with those described in EPA CFR 40 Part 89, Subpart D & E and ISO8178-1 for measuring HC, CO, PM, NOx. Data shown is based on steady state operating conditions of 77° F, 28.42 in HG and number 2 diesel fuel with 35° API and LHV of 18,390 btu/lb. The nominal emissions data shown is subject to instrumentation, measurement, facility and engine to engine variations. Emissions data is based on 100% load and thus cannot be used to compare to EPA regulations which use values based on a weighted cycle.

3412C
700 ekW/ 875 kVA/ 60 Hz/ 1800 rpm/ 480 V/ 0.8 Power Factor

Rating Type: STANDBY

Fuel Strategy: LOW FUEL CONSUMPTION

Applicable Codes and Standards:

AS1359, CSA C22.2 No100-04, UL142,UL489, UL869, UL2200,
NFPA37, NFPA70, NFPA99, NFPA110, IBC, IEC60034-1, ISO3046, ISO8528,
NEMA MG1-22,NEMA MG1-33, 2006/95/EC, 2006/42/EC, 2004/108/EC.

Note: Codes may not be available in all model configurations. Please consult your local Cat Dealer representative for availability.

STANDBY:Output available with varying load for the duration of the interruption of the normal source power. Average power output is 70% of the standby power rating. Typical operation is 200 hours per year, with maximum expected usage of 500 hours per year.

Ratings are based on SAE J1349 standard conditions. These ratings also apply at ISO3046 standard conditions

Fuel Rates are based on fuel oil of 35° API [16° C (60° F)] gravity having an LHV of 42 780 kJ/kg (18,390 Btu/lb) when used at 29° C (85° F) and weighing 838.9 g/liter (7.001 lbs/U.S. gal.). Additional ratings may be available for specific customer requirements, contact your Cat representative for details. For information regarding Low Sulfur fuel and Biodiesel capability, please consult your Cat dealer.

www.Cat-ElectricPower.com

Performance No.: DM0634-04

Feature Code: 412DEAB

Generator Arrangement: 1492439

Date: 07/04/2016

Source Country: U.K.

The International System of Units (SI) is used in this publication. CAT, CATERPILLAR, their respective logos, ADEM, EUI, S•O•S, "Caterpillar Yellow" and the "Power Edge" trade dress, as well as corporate and product identity used herein, are trademarks of Caterpillar and may not be used without permission.