



JCB 537-135

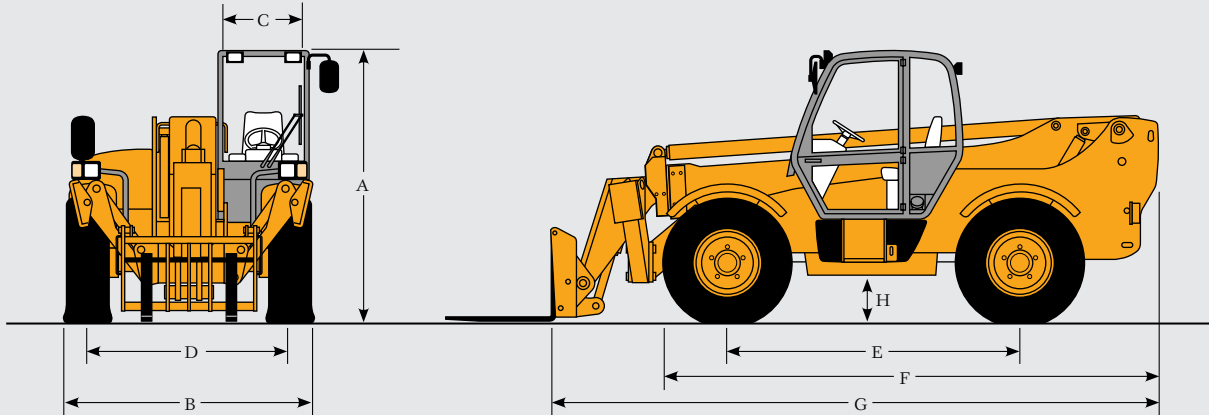
LOADALL



3.7 TONNES TO 13.5 METRES LIFT HEIGHT.

GENERAL SPECIFICATION

STATIC DIMENSIONS

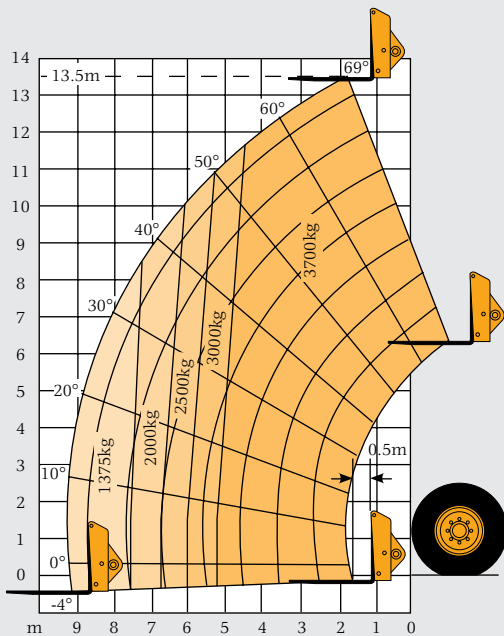


A Overall height	2.59m	8' 6"
B Overall width (over tyres)	2.35m	7' 9"
C Inside width of cab	0.94m	3' 1"
D Front track	1.90m	6' 3"
E Wheelbase	2.90m	9' 6"
F Overall length to front tyres	5.18m	17' 0"
G Overall length to front carriage	6.25m	20' 6"
H Ground clearance	0.40m	1' 4"

Width over fully extended stabilizers	2.73m	8' 11"
Overall length to stabilizers – retracted	5.74m	18' 10"
Overall length to stabilizers – extended	5.77m	18' 11"
Outside turn radius (over tyres)	4.10m	13' 5"
Departure angle	30°	
Weight	10340kg	22796lb
Tyres	15.5-25	

PERFORMANCE

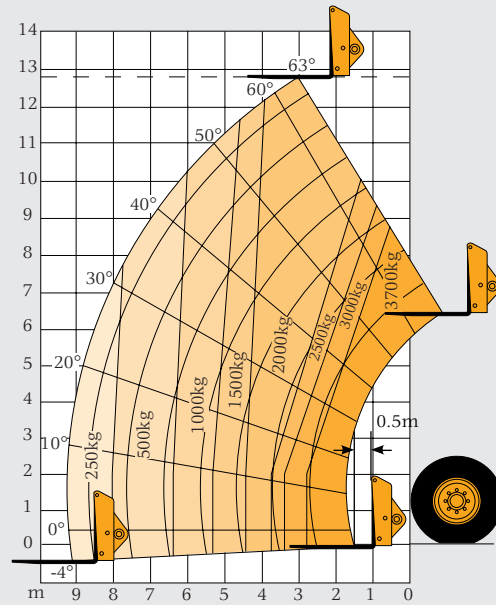
WITH STABILISERS EXTENDED



Maximum lift capacity	3700kg	8157lb
Lift capacity to full height	3700kg	8157lb
Lift capacity at full reach	1375kg	3030lb
Lift height	13.50m	44' 3"
Reach at maximum lift height	1.68m	5' 6"
Maximum forward reach	9.25m	30' 4"
Reach with 1 tonne load	9.25m	30' 4"
Placing height	12.94m	42' 5"

Complies with stability test EN1459 annex B.
Lift heights are with all wheels on the ground.

STABILISERS RETRACTED WITH CHASSIS LEVELLING (SWAY) (CHASSIS LEVELLING ANGLE ±9°)



Maximum lift capacity	3700kg	8157lb
Lift capacity to full height	2000kg	4410lb
Lift capacity at full reach	250kg	550lb
Lift height	12.82m	42' 1"
Reach at maximum lift height	2.94m	9' 8"
Maximum forward reach	9.25m	30' 4"
Reach with 1 tonne load	6.4m	21' 0"
Placing height	12.2m	39' 11"

Complies with stability test EN1459 annex B.
Lift heights are with all wheels on the ground.

JCB 537-135 LOADALL

GENERAL SPECIFICATION

ENGINE

4 cylinders. Bore 103mm (4.06in); stroke 127mm (5in); displacement 4.20ltr (256in³).

Latest technology and advanced design provides low fuel consumption, reduced noise, high torque and power output, total reliability and minimal maintenance.

Easily replaceable pre-finished dry liners, five bearing, heat treated crankshaft. Expansion controlled pistons. Two-stage, dry type air filter with primary and safety elements, and pre cleaner.

Engine conforms with EC mobile off-highway emissions regulations (stage 1).

Engine options

Power at 2200rpm
59.7kW (80hp) Naturally Aspirated
Torque at 1400rpm
290Nm (213.8lb/ft)

Power at 2200rpm
76.1kW (102hp) Turbo Charged
Torque at 1400rpm
411Nm (303.1lb/ft)

TRANSMISSION

JCB 4 speed powershift transmission incorporating torque converter, bevel box and a 4 speed powershift gearbox in one resiliently mounted unit.

A combined steering column mounted switch incorporating directional control and 4 forward and reverse powershift gears.

Travel speed 25km/h (15.5mph).

Front and rear drive axles

JCB epicyclic hub reduction drive/steer axles with Max-Trac torque proportioning differentials. Permanent 4 wheel drive

BRAKES

Service brakes servo assisted

Hydraulically activated, self-adjusting, oil-immersed in-board multi-disc type in front axle and rear axle.

Parking brake

Hand operated disc brake on output of gearbox.

BOOM AND CARRIAGE

Boom is manufactured from high tensile steel.

Low maintenance, hard wearing pads.

JCB Q-fit self-levelling carriage with lever operated pin locking accepts pallet forks and a wide range of attachments.

SERVICE CAPACITIES

Fuel tank	125ltr (27.5gal)
-----------	------------------

Hydraulic tank	131ltr (28.8gal)
----------------	------------------

Coolant	23ltr (5.1gal)
---------	----------------

HYDRAULICS

Single gear pump, with suction strainer and filter.

Operating system pressure:
241 bar (3500 psi).

Flow at system pressure
(at 2200 rpm) – 110ltr/min.

Cycle times (secs)	
--------------------	--

Boom raise	14.2
------------	------

Boom lower	11.9
------------	------

Extend	22.3
--------	------

Retract	18.6
---------	------

Bucket dump	2.4
-------------	-----

Bucket crowd	3.2
--------------	-----

SAFETY CHECK VALVES

Fitted to carriage tilt, telescopic and boom lift rams.

Stabilizer legs and chassis levelling rams fitted with check valves on rod and head side, plus cut-out system to disconnect movement when boom is raised.

ELECTRICS

12 v negative earth.

92 AH battery.

65 amp alternator.

Full road lighting.

Reversing light.

Direction indicators.

Hazard warning.

Reverse alarm.

CAB

Quiet safe and comfortable cab conforms to ROPS ISO 3471 and FOPS ISO 3449. Tinted glass all round with laminated roof screen. Roof bars, front, rear and roof screen wash/wipe and heater/screen demister. Opening rear window. Audio-visual warning system for coolant temperature, engine oil pressure, air cleaner, battery charge, transmission oil temperature and pressure. Hourmeter, road speed and inclinometer.

Engine temperature and fuel gauge.

Mechanical joystick, direct acting hydraulic control levers. Adjustable column incorporates stalk bar powershift change and forward reverse shuttle. Throttle, brake pedal floor mounted. Adjustable suspension seat with adjacent park brake.

Automatic eye level audio-visual load moment indicator warning system receiving a signal from a load sensor on the rear axle.

This system continuously monitors the machine's forward stability and leaves the operator in control at all times.

Optional indicator lamps to show when the stabilizers are on firm ground.

Safety canopy as above but with side glass and roof glass only (screen wiper and heater/screen demister not applicable).

STEERING

Hydrostatic power steering.

Three steer mode options: front wheel steer; all wheel steer; crab steer: operated from in the cab by a selection switch with automatic alignment.

OPTIONS AND ACCESSORIES

Options: Front and rear working lights, rotating flashing beacon, fire extinguisher, industrial tyres, electrical 2/4WD disconnect, windscreen guard, load guard, air suspension seat, deluxe cab trim, roof blind, radio kit, heavy duty battery, air conditioning, chassis levelling (sway).

Attachments: Contact your local dealer for details of the comprehensive range.