



DP/GP20NT - GP20ZNT

DP/GP25NT - GP25ZNT

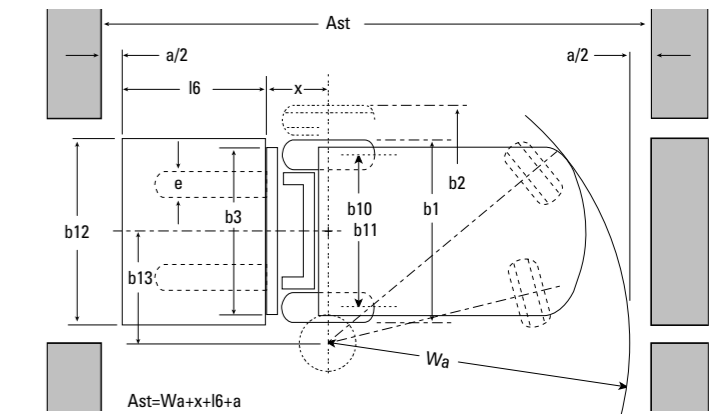
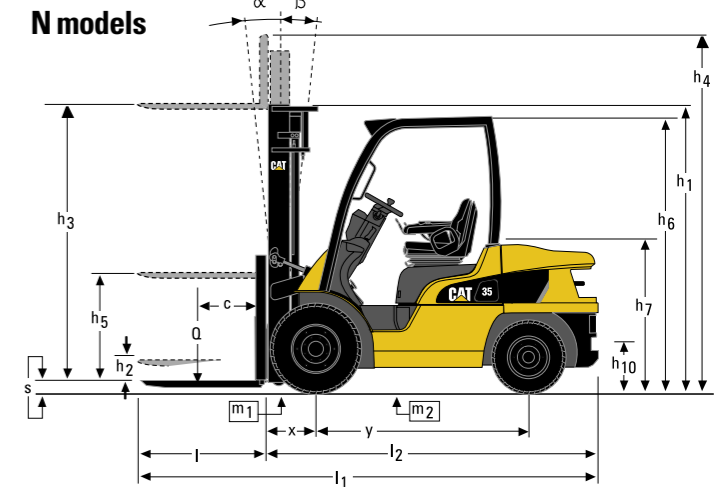
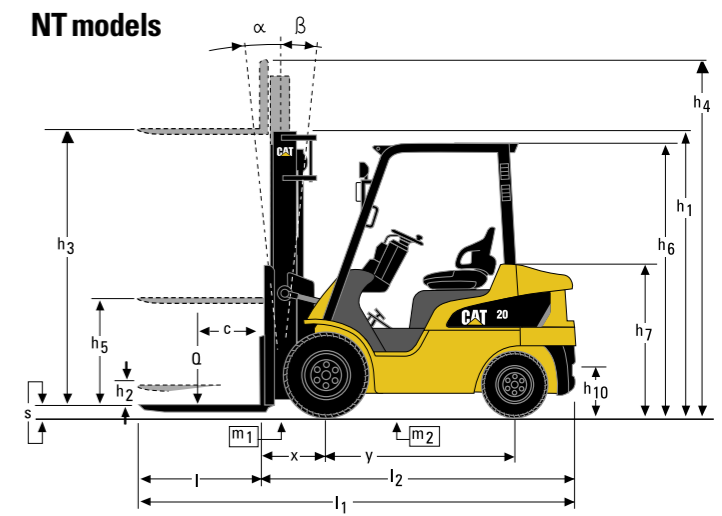
DP30N - GP30NT - DP35N - GP35NT

Specifications

Engine powered lift trucks

2.0 - 3.5 tonnes

Characteristics		Cat Lift Trucks	Cat Lift Trucks	Cat Lift Trucks	Cat Lift Trucks	Cat Lift Trucks	Cat Lift Trucks	Cat Lift Trucks	Cat Lift Trucks	Cat Lift Trucks	Cat Lift Trucks	Cat Lift Trucks
1.01	Manufacturer (abbreviation)	DP20NT	DP25NT	DP30N	DP35N	GP20NT	GP20ZNT	GP25NT	GP25ZNT	GP30NT	GP35NT	
1.02	Manufacturer's model designation	Diesel	Diesel	Diesel	Diesel	Petrol	Petrol	Petrol	Petrol	Petrol	Petrol	
1.03	Power source: (battery, diesel, LP gas, petrol)	Seated	Seated	Seated	Seated	Seated	Seated	Seated	Seated	Seated	Seated	
1.04	Operator type: pedestrian, (operator)-standing, -seated	2000	2500	3000	3500	2000	2000	2500	2500	3000	3500	
1.05	Load capacity	Q (kg)	500	500	500	500	500	500	500	500	500	
1.06	Load centre distance	c (mm)	455	455	490	490	455	455	455	490	490	
1.08	Load distance, axle to fork face	x (mm)	1600	1600	1700	1700	1600	1600	1600	1700	1700	
1.09	Wheelbase	y (mm)										
Weight												
2.01	Truck weight, without load / including battery (simplex mast, lowest lift height)	kg	3420	3710	4360	4770	3310	3610	3610	4250	4660	
2.02	Axle loading with maximum load, front/rear (simplex mast, lowest lift height)	kg	4690/730	5480/730	6530/830	7270/1000	4650/660	5440/670	5440/670	6490/760	7220 / 940	
2.03	Axle loading without load, front/rear (simplex mast, lowest lift height)	kg	1500/1920	1480/2230	1780/2580	1720/3050	1460/1850	1440/2170	1440/2170	1730/2520	1680 / 2980	
Wheels, Drive Train												
3.01	Tyres: V=solid, L=pneumatic, SE=solid pneumatic - front/rear	L/L	L/L	L/L	L/L	L/L	L/L	L/L	L/L	L/L	L/L	
3.02	Tyre dimensions, front	7.00-12-12PR	7.00-12-12PR	28x9-15	250-15	7.00-12-12PR	7.00-12-12PR	7.00-12-12PR	7.00-12-12PR	28x9-15-12PR	250-15-16PR	
3.03	Tyre dimensions, rear	6.00-9-10PR	6.00-9-10PR	6.50-10	6.50-10	6.00-9-10PR	6.00-9-10PR	6.00-9-10PR	6.00-9-10PR	6.50-10-10PR	6.50-10-12PR	
3.05	Number of wheels, front/rear (x=driven)	2x/2	2x/2	2x/2	2x/2	2x/2	2x/2	2x/2	2x/2	2x/2	2x/2	
3.06	Track width (centre of tyres), front	b10 (mm)	960	960	1060	1060	960	960	960	1060	1060	
3.07	Track width (centre of tyres), rear	b11 (mm)	980	980	980	980	980	980	980	980	980	
Dimensions												
4.01	Mast tilt, forwards/backwards	α/β °	6/12	6/12	6/10	6/10	6/12	6/12	6/12	6/12	6/12	
4.02	Height with mast lowered (see tables)	h1 (mm)	1995	1995	2165	2300	1995	1995	1995	2045	2180	
4.03	Free lift (see tables)	h2 (mm)	100	100	100	100	100	100	100	100	100	
4.04	Lift height (see tables)	h3 (mm)	3000	3000	3270	3300	3000	3000	3000	3030	3000	
4.05	Overall height with mast raised	h4 (mm)	4045	4045	4330	4360	4045	4045	4045	4085	4055	
4.07	Height to top of overhead guard	h6 (mm)	2075	2075	2173	2183	2075	2075	2075	2095	2105	
4.08	Seat height	h7 (mm)	1114	1114	1114	1114	1114	1114	1114	1114	1114	
4.12	Tow coupling height	h10 (mm)	n/a	n/a	330	340	n/a	n/a	n/a	n/a	n/a	
4.19	Overall length	l1 (mm)	3558	3625	3795	3860	3558	3625	3625	3795	3860	
4.20	Length to fork face (includes fork thickness)	l2 (mm)	2488	2555	2725	2790	2488	2555	2555	2725	2790	
4.21	Overall width	b1/b2 (mm)	1150	1150	1275/1710	1290/1710	1150	1150	1150	1275	1290	
4.22	Fork dimensions (thickness, width, length)	s, e, l (mm)	40x110x1070	40x110x1070	45x125x1070	45x125x1070	40x110x1070	40x110x1070	40x110x1070	45x125x1070	45x125x1070	
4.23	Fork carriage to DIN 15 173 A/B/no		2A	2A	3A	3A	2A	2A	2A	3A	3A	
4.24	Fork carriage width	b3 (mm)	1000	1000	1000	1000	1000	1000	1000	1000	1000	
4.31	Ground clearance under mast, with load	m1 (mm)	115	115	135	150	115	115	115	135	135	
4.32	Ground clearance at centre of wheelbase, with load (forks lowered)	m2 (mm)	135	135	165	170	135	135	135	165	170	
4.33	Working aisle width with 1000 x1200 mm pallets, crosswise	Ast (mm)	3855	3885	4070	4130	3855	3885	3885	4070	4130	
4.34	Working aisle width with 800 x1200 mm pallets, crosswise	Ast (mm)	3655	3685	3870	3930	3655	3685	3685	3870	3930	
4.35	Turning circle radius	Wa (mm)	2200	2230	2380	2440	2200	2230	2230	2380	2440	
4.36	Minimum distance between centers of rotation	b13 (mm)	n/a	n/a	782.4	782.4	n/a	n/a	n/a	n/a	n/a	
Performance												
5.01	Travel speed, with/without load	km/h	19/19	19/19	19/19.5	19/19.5	19/19	19/19	19/19	19/19	19/19	
5.02	Lifting speed, with/without load	m/s	0.64/0.67	0.64/0.67	0.51/0.54	0.43/0.46	0.59/0.68	0.51/0.60	0.59/0.68	0.47/0.51	0.40/0.43	
5.03	Lowering speed, with/without load	m/s	0.50/0.50	0.50/0.50	0.53/0.50	0.42/0.40	0.50/0.50	0.50/0.50	0.50/0.50	0.53/0.50	0.42/0.40	
5.05	Rated drawbar pull, with/without load	N	17200/16700	17000/16600	16600/16600	15800/15800	16400/16000	13900/13800	16100/15900	15900/16100	15200/15300	
5.07	Gradeability, with/without load	%	34/-	29/-	24/-	20/-	33/-	24/-	28/-	23/-	19/-	
5.10	Service brakes (mechanical/hydraulic/electric/pneumatic)		Hydraulic	Hydraulic	Hydraulic	Hydraulic	Hydraulic	Hydraulic	Hydraulic	Hydraulic	Hydraulic	
I.C. Engine												
7.01	Manufacturer / Type		S4S	S4S	S4S-DPB38kW	S4S-DPB38kW	K21	K25	K21	K25	K25	
7.02	Rated output to ISO 1585	kW	38.1	38.1	38	38	40	34	40	40	40	
7.03	Rated speed to DIN 70 020	rpm	2250	2250	2300	2300	2200	2200	2200	2200	2200	
7.04	Number of cylinders / cubic capacity	/cm3	4/3331	4/3331	4/3331	4/3331	4/2488	4/2065	4/2488	4/2488	4/2488	
Miscellaneous												
8.01	Type of drive control		Powershift/1	Powershift/1	Powershift/1	Powershift/1	Powershift/1	Powershift/1	Powershift/1	Powershift/1	Powershift/1	
8.02	Operating pressure for attachments	bar	181	181	180	180	181	181	181	181	181	
8.03	Oil flow for attachments	l/min	75	75	73	73	68	76	68	76	73	
8.05	Towing coupling design / DIN type, ref.		n/a	n/a	PIN	PIN	n/a	n/a	n/a	n/a	n/a	



$Ast = Wa + x + l6 + a$
 $Ast =$ Working aisle width with load
 $a =$ Safety clearance (200 mm)
 $l6 =$ Pallet length (800 or 1000 mm)
 $b12 =$ Pallet width (1200 mm)



Lower Cost of Ownership

- Design improvements have increased the service interval to 500* hours, thus reducing the total cost of ownership.
- Various air-intake options like pre-cleaner or double element cyclone air cleaner with dust warning indicator increase engine service life in dusty applications.
- For operation in demanding applications, cooling options such as heavy duty radiator and dust screen significantly reduce the risk of overheating.
- Hydraulic pump is directly driven by the engine to reduce the number of wearable items.

Unmatched Productivity

- New state-of-the-art Petrol engine with improved performance, lower noise levels and emission and more efficient fuel consumption.
- Special power train layout to lower the center of gravity, increasing truck stability and residual lifting capacities.
- Increased back tilt angle to reduce the risk of loose loads sliding off the forks.

Safety and Ergonomics

- Adjustable steering column with memory position for comfortable operating positions and easy on/off access.

- Fully hydrostatic steering and small diameter steering wheel for easy maneuvering with reduced effort for the operator.
- Automotive style layout of brake and accelerator pedals. The drum brake system is self-energizing and self-adjusting, for low pedal effort and easy operation.
- Double action park brake to avoid unsafe situations as a result of unintended brake release.
- Comfortable and durable full-suspension vinyl seat, with adjustable position, back-inclination and weight adjustment. Standard seat is fitted with hip restraints,

- a seat belt and seat switch to prevent truck operation when the operator is not seated.
- Design of mast, fork carriage and overhead guard provides excellent all round visibility, in all loading and unloading operations.
- Fully floating mounted power train results in very low noise and vibration levels.

* conditions apply

Cat® Lift Trucks.

Your partner in materials handling.

DP/GP20(Z)NT - DP/GP25(Z)NT					DP/GP20(Z)NT		DP/GP25(Z)NT		GP30NT					
Mast Type	h3	h1	h4	h2/h5	Q @	h2/h5	Q @	Mast Type	h3	h1	h4	h2/h5	Q @	
	mm	mm	mm	mm	c=500mm kg				mm	mm	mm	mm		c=500mm kg
Simplex	3000	2000	4060	100	2000	100	2500	Simplex	3030	2050	4090	100	3000	
	3300	2150	4360	100	2000	100	2500		3270	2170	4330	100	3000	
	3740	2410	4800	100	2000	100	2500		3700	2430	4760	100	3000	
	4100	2590	5160	100	2000	100	2500		4000	2610	5060	100	3000	
	4500	2800	5560	100	1950	100	2450 *		4500	2870	5560	100	2950	
	5000	3050	6060	100	1900 *	100	2350 *		5000	3120	6060	100	2850	
	5500	3300	6560	100	1850 *	100	2250 *		5500	3370	6560	100	2750	
	6000	3550	7060	100	1800 *	100	2150 *		6000	3640	7060	100	2400 *	
Duplex	3000	2000	4060	940	2000	940	2500	Duplex	3000	2050	4060	985	3000	
	3300	2150	4360	1090	2000	1090	2500		3300	2170	4310	1105	3000	
	3530	2270	4590	1210	2000	1210	2500		3530	2290	4550	1225	3000	
	4020	2590	5080	1530	2000	1530	2500		4020	2610	5070	1555	3000	
Triplex	3730	1810	4790	750	2000	750	2500	Triplex	3730	1830	4750	765	3000	
	4030	1910	5090	850	2000	850	2500		4030	1930	5050	865	3000	
	4300	2000	5360	940	1950	940	2450		4300	2050	5380	985	3000	
	4750	2150	5810	1090	1900	1090	2350 *		4750	2170	5760	1105	2900	
	5060	2270	6120	1210	1850 *	1210	2300 *		5060	2290	6120	1225	2800	
	5500	2410	6560	1350	1800 *	1350	2200 *		5500	2430	6510	1375	2750	
	5990	2590	7050	1530	1750 *	1530	2100 *		5990	2610	7030	1555	2400 *	
	6500	2850	7560	1790	1650 *	1790	1750 *		6500	2870	7530	1815	1750 *	
	7000	3050	8060	1990	1250 *	1990	1250 *		7000	3070	8060	2015	1250 *	

Mast Performance and Capacity

- h1 Height with mast lowered
- h2 Standard free lift
- h3 Lift height
- h4 Height with mast raised
- h5 Full free lift
- Q Lifting capacity, rated load
- c Load centre (distance)

* Capacities shown require truck equipped with dual tyres. Consult your dealer for the maximum back tilt allowed, to obtain the capacities specified.

Cat Lift Trucks is renowned for its worldwide distribution network, but you will always find an experienced and dedicated team of professionals close to you. Individuals committed to helping you maximise profits. With Cat Lift Trucks, your investment is in safe hands.

GP35NT						DP30N					DP35N							
Mast Type	h3	h1	h4	h2/h5	Q @	Mast Type	h3	h1	h4	h2/h5	Q @	Mast Type	h3	h1	h4	h2/h5	Q @	
	mm	mm	mm	mm	c = 500mm kg		mm	mm	mm	mm	mm		c = 500mm kg	mm	mm	mm	mm	mm
Simplex	3000	2180	4060	100	3500	Simplex	3030	2050	4090	100	3000	Simplex	3000	2180	4060	100	3500	
	3300	2300	4360	100	3500		3270	2170	4330	100	3000		3300	2300	4360	100	3500	
	3720	2510	4780	100	3500		3700	2430	4760	100	3000		3720	2510	4780	100	3500	
	4000	2770	5060	100	3500		4000	2610	5060	100	3000		4000	2770	5060	100	3500	
	4500	3010	5560	100	3500		4500	2870	5560	100	2950		4500	3010	5560	100	3500	
	5000	3260	6060	100	3400		5000	3120	6060	100	2850		5000	3260	6060	100	3400	
								5500	3370	6560	100		2750	5500	3510	6560	100	2850
Duplex	3000	2180	4070	1125	3500	Duplex	3000	2050	4060	1030	3000	Duplex	3010	2180	4070	1170	3500	
	3300	2300	4360	1245	3500		3250	2170	4310	1150	3000		3300	2300	4360	1290	3500	
	3500	2450	4560	1385	3500		3700	2430	4760	1420	3000		3720	2625	4780	1610	3500	
	4000	2770	5060	1710	3500		4010	2610	5070	1600	3000		4000	2770	5060	1750	3500	
Triplex	3730	1940	4790	885	3500	Triplex	3690	1830	4750	810	3000	Triplex	3730	1940	4790	930	3500	
	4010	2060	5070	1005	3500		3990	1930	5050	910	3000		4010	2060	5070	1050	3500	
	4390	2180	5450	1125	3500		4320	2050	5380	1030	3000		4390	2180	5450	1170	3500	
	4700	2300	5760	1245	3450		4700	2170	5760	1150	2900		4700	2300	5760	1290	3450	
	5030	2450	6090	1385	3350		5060	2290	6120	1270	2800		5030	2450	6090	1430	3350	
	5580	2630	6640	1565	3200 *		5450	2430	6510	1420	2750		5580	2630	6640	1610	2800	
	6000	2770	7060	1705	2400 *		5970	2610	7030	1600	2050		6000	2770	7060	1750	2050	
								6470	2870	7530	1860		1500	6510	2940	7570	1930	1500
								7000	3070	8060	2060		1050	7000	3140	8060	2120	1050

All dimensions include load backrest. In case load backrest is not used h5 will increase by 390 (20, 25), 350 (30), 240 (35) mm, while h4 will decrease by 390 (20, 25), 350 (30), 240 (35) mm.

info@catliftruck.com

www.catliftruck.com

CESC1333AME(09/10)ok

Copyright ©2010, MCFE. All rights reserved.

CATERPILLAR, CAT, their respective logos,

'Caterpillar yellow' and the 'Power Edge' trade dress, as well as corporate and product identity used herein, are trademarks of Caterpillar and may not be used without permission.

Printed in The Netherlands

NOTE: Performance specifications may vary depending on standard manufacturing tolerances, vehicle condition, types of tyres, floor or surface conditions, applications, or operating environment. Trucks may be shown with non-standard options. Specific performance requirements and locally available configurations should be discussed with your Cat lift trucks Dealer. Cat Lift Trucks follows a policy of continual product improvement. For this reason, some materials, options and specifications could change without notice.

